



 **17-21**  
Sept. 2024

 **Vienna, Austria**  
Aula der Wissenschaften

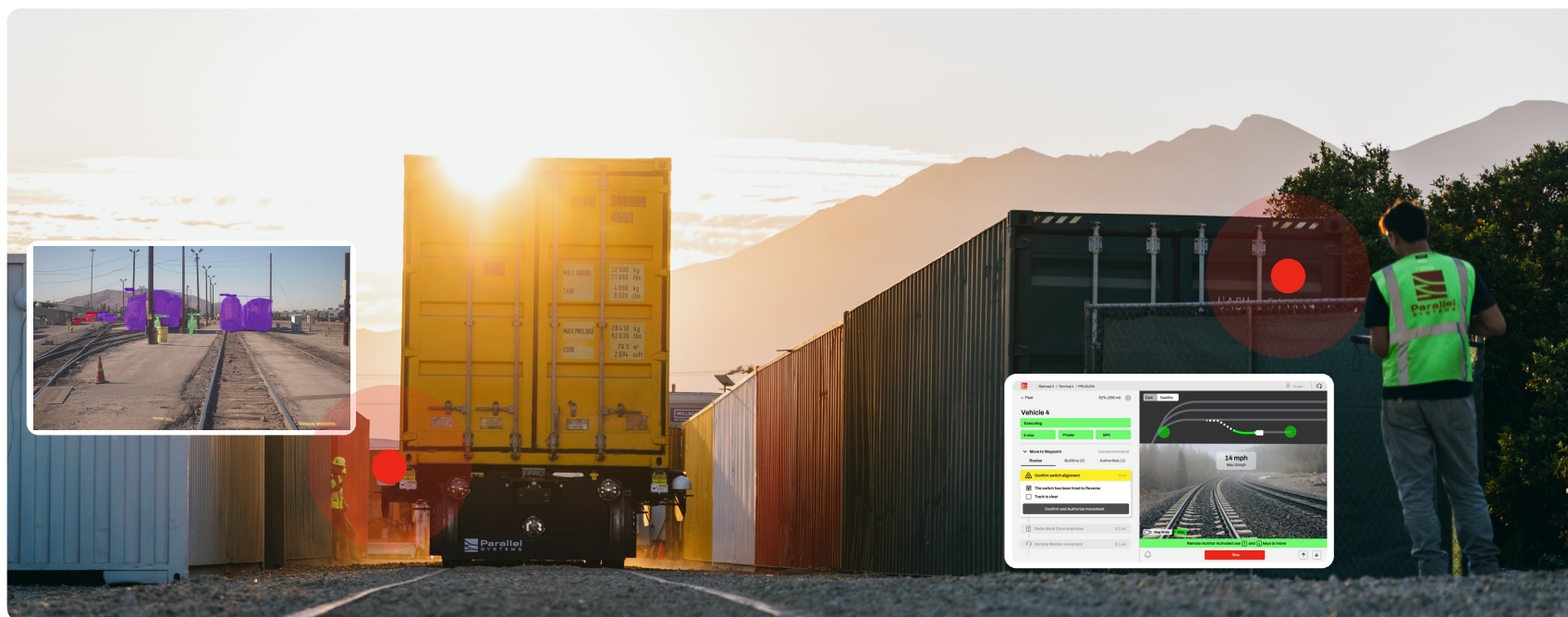
# Applying Technologies to Improve Safety and Rail Market Share

Matt Soule, Parallel Systems



# Using Technology for Rail Growth

Parallel's mission is to transform freight for climate and public benefit.

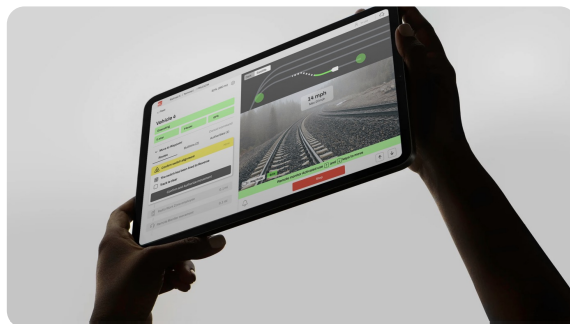


# Product



## Vehicles and Chargers

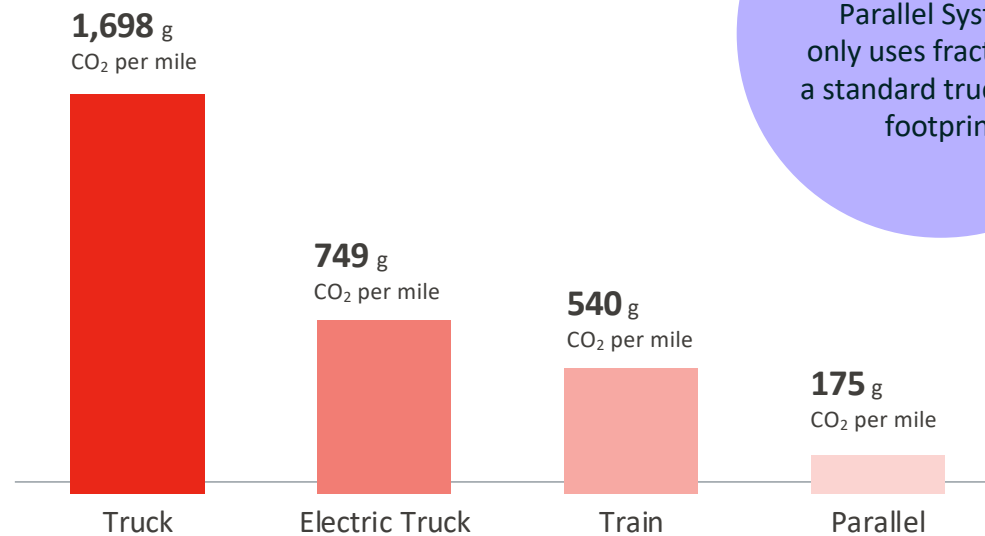
Autonomous battery electric vehicles and automatic charging equipment for existing infrastructure



## Software

Onboard vehicle and backend software that integrate into existing controls and enterprise systems

# Quantifying The Climate Impact



**10%**

Parallel Systems  
only uses fractions of  
a standard truck's CO<sub>2</sub>  
footprint

CO<sub>2</sub> is operating emissions are per shipping container and 62% of U.S. electricity is produced from fossil fuels (Source: U.S. EIA)  
Shipping rates are based on the 400 mile shipping lane between Los Angeles and San Francisco

# Layered Approach to Improved Safety



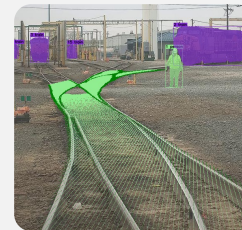
**Modal Conversion**  
Converting trucking to rail is a 10x improvement in safety



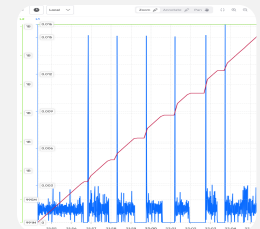
**Contact Platooning**  
Remove people from the most hazardous work in the rail yard



**Improved Brakes**  
Adaptable braking force and automatic parking brake



**Train Control + Perception**  
Deterministic safety combined with computer vision



**Telemetry**  
On board sensors give real time and predictive insights for maintenance and safety





# Operational Advantages

Self classification and auto platoon assembly in action



## Example New Services

Parallel can replace long drays or open new intermodal service over shorter and lower density lanes



Annual container volume	11,600
Travel distance	7 miles / 11 km
Vehicles / chargers in service	5/1
Project capex	< \$3M USD



## Deployment Activities and Next Steps



Parallel is working with multiple railroads internationally and is looking forward to mainline testing programs in both the US and Australia in 2025.



**Thank you for  
your attention!**

