



**17-21**  
Sept. 2024



**Vienna, Austria**  
Aula der Wissenschaften

# Autonomous Detection and Alert with Cutting-edge Computer Vision Enhancing Platform Safety

Dr Billy Wai Pan Tam  
Senior Technology Development Manager – Operations Systems  
MTR Corporation Limited



# Hong Kong

# #1

City for *Public  
Transport*

Source: Urban Mobility Readiness Index  
2022 and 2023

## MTR Network in Hong Kong



99 Stations



~5M Pax/day





# Project Background



13 Stations



Automatic Platform Gate  
Installation in Progress

To Lok Ma Chau / Lo Wu

Destination	Platform	Next Train
Lok Ma Chau	2	3 min
<div> <div>1</div> <div>2</div> <div>3</div> <div>First Class</div> <div>5</div> <div>6</div> <div>7</div> <div>8</div> <div>9</div> </div>		

Please move to Cars with more space

Lo Wu	2	7 min
Lo Wu	2	11 min
Lok Ma Chau	2	15 min

High Traffic Density

# Uniqueness in East Rail Line



Platform Yellow Line



Track Area



Operations Area

## Pain Point to Station Staff

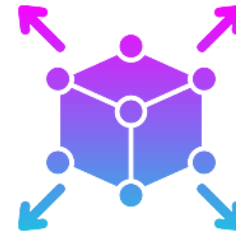


There are a total of around 400 platform cameras monitored by station staff in these 13 stations.

# Project Objective



***Artificial Intelligence & Autonomous***



***Easy To Implement & Scalable***



***Enhance Safety & Operational Efficiency***

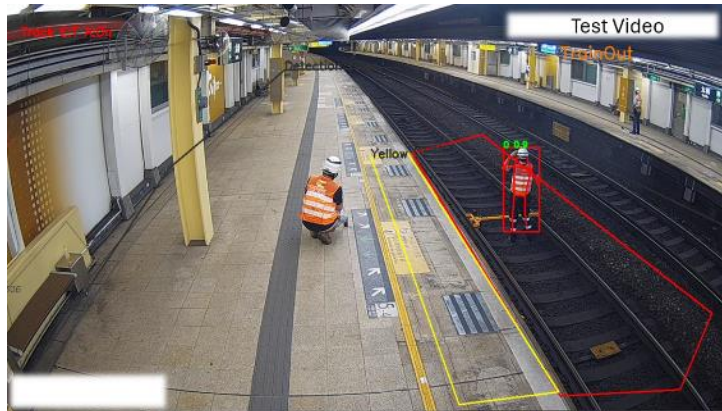


***Detect Intrusion / Object & Analyze Passenger Behavior with Safety Concern***



# Key Functions – Intrusion

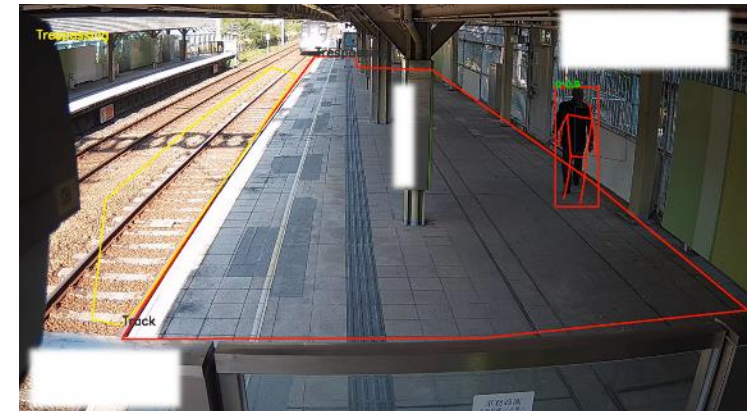
Person / Object on Track



Beyond Yellow Line



Trespassing



# Key Functions – Behavior & Object

## Person Collapse



## Wandering



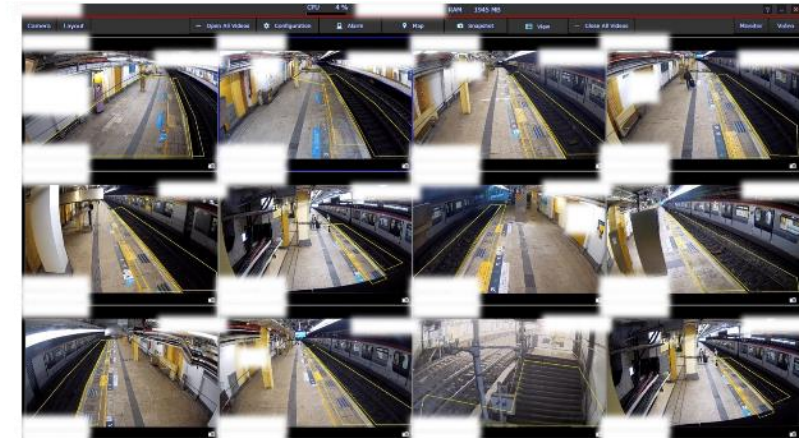
## Presence of Dogs / Cats





# Monitoring Facilities for Station Staff

Alarms can be monitored by station staff in station control room, platform supervisor booth and platform supervisor stand.



# Actions by Station Staff

## Critical Level Alarm

- The train is tripped immediately by pushing the emergency train stop on the platform.



# Actions by Station Staff

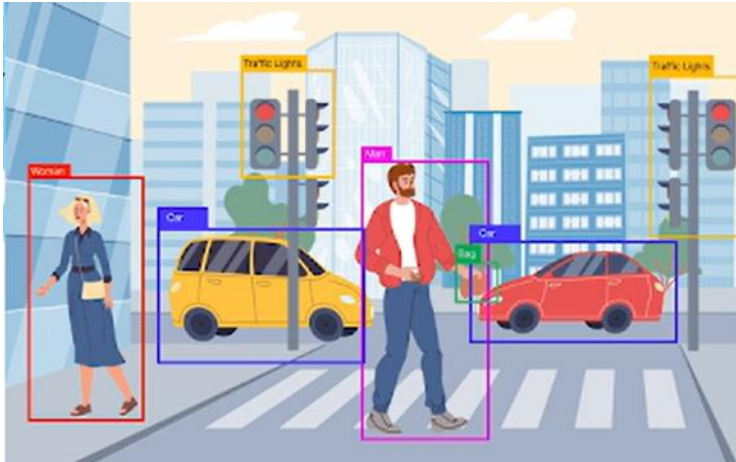
## Alert Level Alarm

- Platform supervisor informs other station staff to follow up the case.
- Automatic public address is triggered for beyond yellow line alarm.

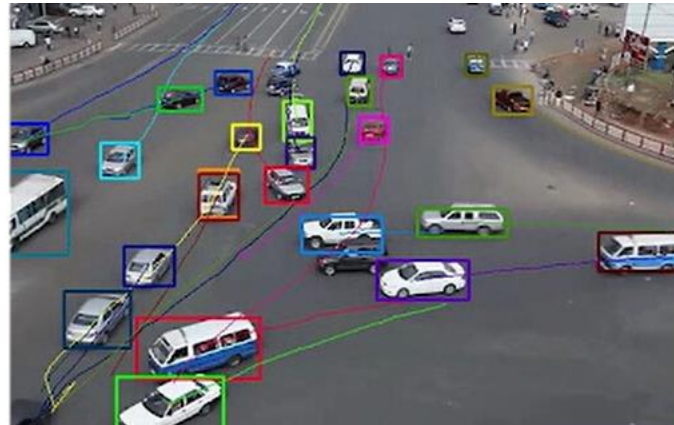




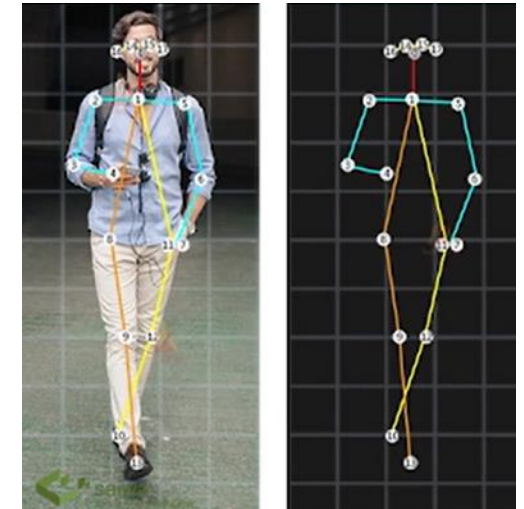
# Customized AI Algorithm Design



Object Detection

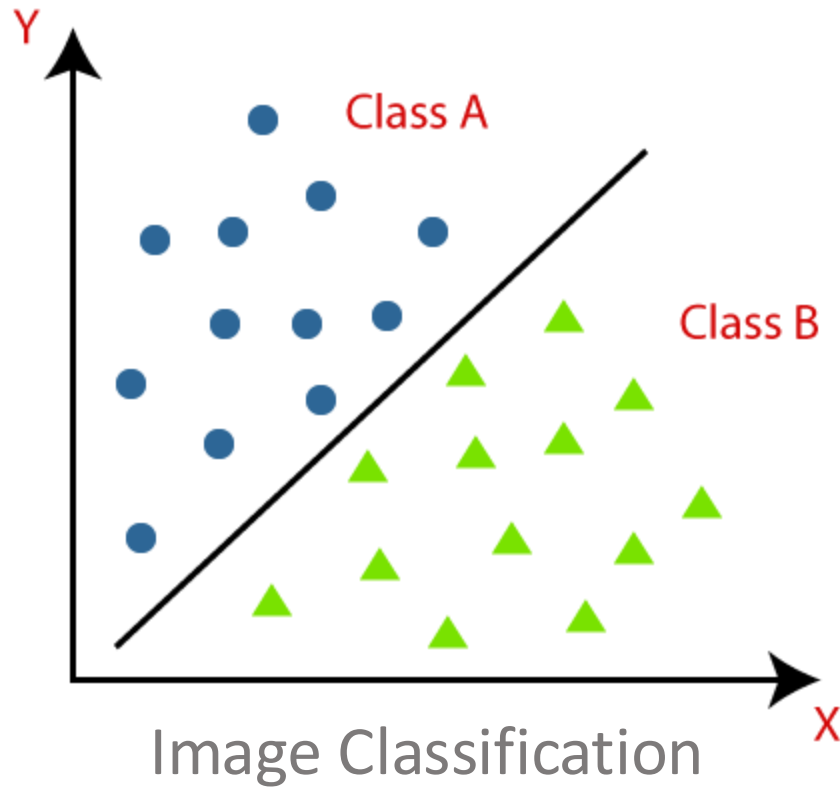


Object Tracking



Skeleton Detection

# Customized AI Algorithm Design



No Train / Train Door Open / Train Door Close

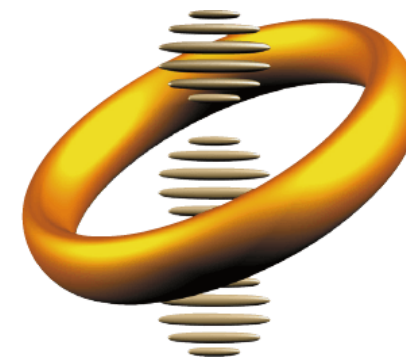
## Our Innovation

The first video analytics solution in Hong Kong developed specifically for railway applications:

- Utilizing cutting-edge video analytics on top of CCTV monitoring
- Training AI models through extensive real and generated image dataset
- Recognizing objects and passenger behaviors for the railway contexts
- Integrating with other systems such as PA to facilitate operations

Hong Kong Short-term Patent granted relevant to this application:

- Monitoring Railway Nodes (HK30032938)





# Example of Successful Case

The system has prevented accidents in the past months.

Home page > Hong Kong news > sudden

**Two visually impaired people accidentally crossed the tracks at MTR Fo Tan Station in one day, one of whom was injured**

*Sing Tao Headline, 30 March 2024*

sudden Update time: 20:39 2024-03-30



- Successfully detected fallen passengers
- Triggered alarm to inform staff
- Station staff timely stopped the approaching train
- Prompt actions to assist the passengers at the same time



**Safety**



**Social  
Responsibility**



**Innovation**



# End of Presentation

