



# IRSC 2022

INTERNATIONAL RAILWAY  
SAFETY COUNCIL

SEVILLA, OCTOBER 16-21, 2022



機電工程署  
EMSD



# I&T APPLICATIONS TO ENHANCE SAFETY IN STATIONS

**Ms C. L. HUI Cherry**

Engineer/Railways 8/2

Electrical and Mechanical Services  
Department, Government of HKSAR,  
China

**Mr H. K. CHAN**

General Manager - Engineering &  
Innovative Centre  
MTR Corporation

# AGENDA

Part 1

Background

Part 2

Successful I&T Applications

Part 3

Conclusion

# Part 1 Background



**IRSC 2022**  
INTERNATIONAL RAILWAY SAFETY COUNCIL  
SEVILLA, OCTOBER 16-21, 2022



機電工程署  
EMSD



# Railway Safety Regulator - Electrical and Mechanical Services Department (EMSD)

**Railways Branch, EMSD** is the railway safety regulator in Hong Kong which regulates safety of mass transit railways, tramways and peak trams. Regulatees include:



**IRSC 2022**  
INTERNATIONAL RAILWAY SAFETY COUNCIL  
SEVILLA, OCTOBER 16-21, 2022



機電工程署  
**EMSD**





# International Recognition

## Participate in International Competitions

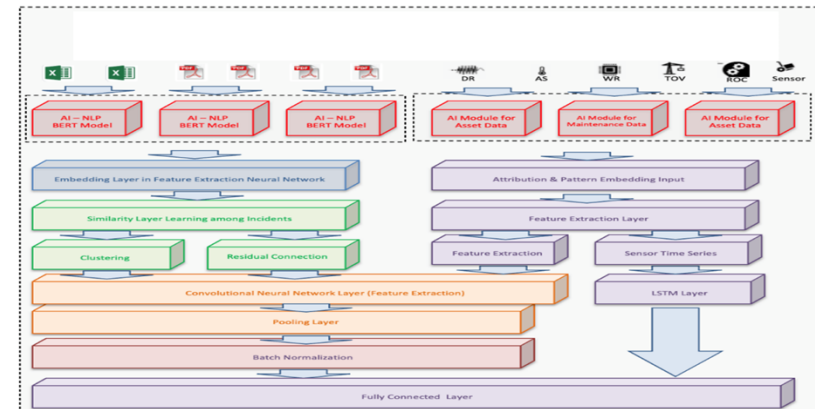
EMSD wins 19 awards at International Exhibition of Inventions of Geneva in 2022. Railway safety related awards:



**Gold medal:**  
Smart Driver Assistant for Automated People Mover



**Silver medal:**  
Semantic AI for Predictive Maintenance of Railway Track Systems



# International Recognition

## Participate in International Competitions

MTR wins various awards in the following projects



**2022 International Exhibition of Inventions of Geneva - Silver Medal & 2021 UITP Award – Special Recognition Award:**

Integrated Speed and Position Supervision System (iSPS) with Smart Junction & Platform Analytics project



**2020 IET Innovation Award:**  
Smart Junction project



**2019 IET Innovation Award & 2021 RFID Journal Award:**

Integrated Speed and Position Supervision System (iSPS) with Small Bollard project



**IRSC 2022**  
INTERNATIONAL RAILWAY SAFETY COUNCIL  
SEVILLA, OCTOBER 16-21, 2022



機電工程署  
**EMSD**





# Part 2

## Successful I&T Applications



**IRSC 2022**  
INTERNATIONAL RAILWAY SAFETY COUNCIL  
SEVILLA, OCTOBER 16-21, 2022



機電工程署  
**EMSD**



# AI-based Accident Prevention System for Escalators

## Problem

- Carrying bulky objects or baby trolley
- Influence by alcohol/ drugs
- Passenger with accessible needs



## Solution


Identify High-risk Passengers



Predict Passengers' Behavior



Trigger Alert

- Light Detection and Ranging (LiDAR)
- Privacy guarantee 
- Detect speed, volume profiling of passengers under crowd
- Tracking path

- AI algorithm identifies characteristics of **4 types** of passengers



- Predicts path

- Initiate relevant PA & visual alert message

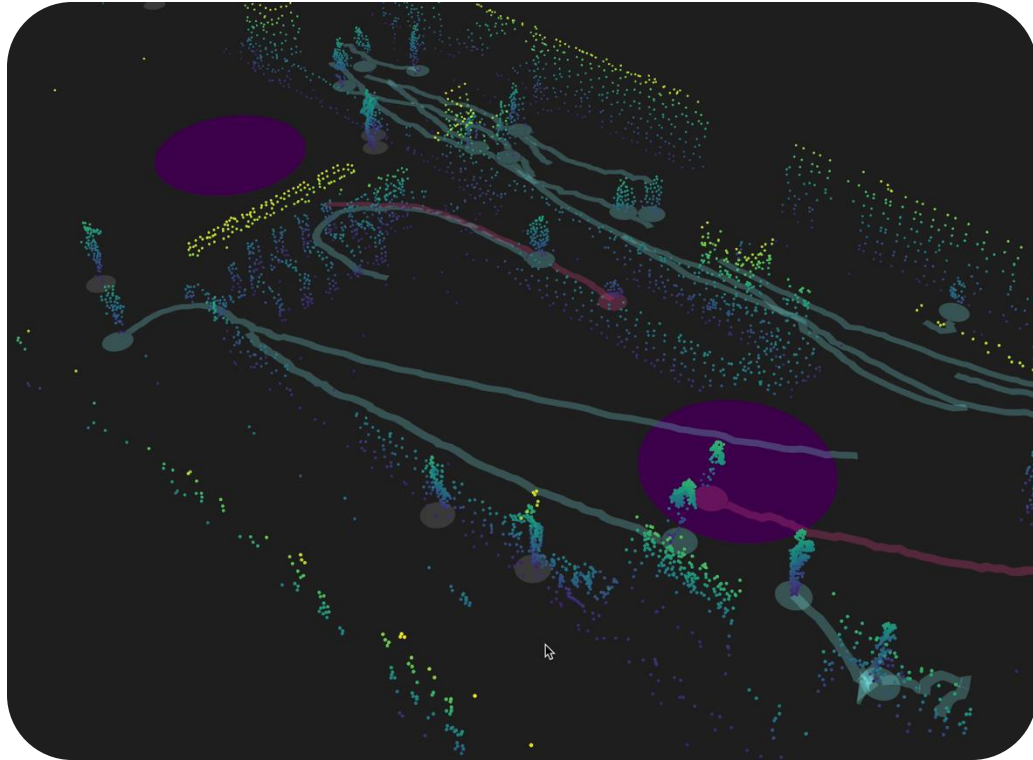


- Instant message sent to station operators

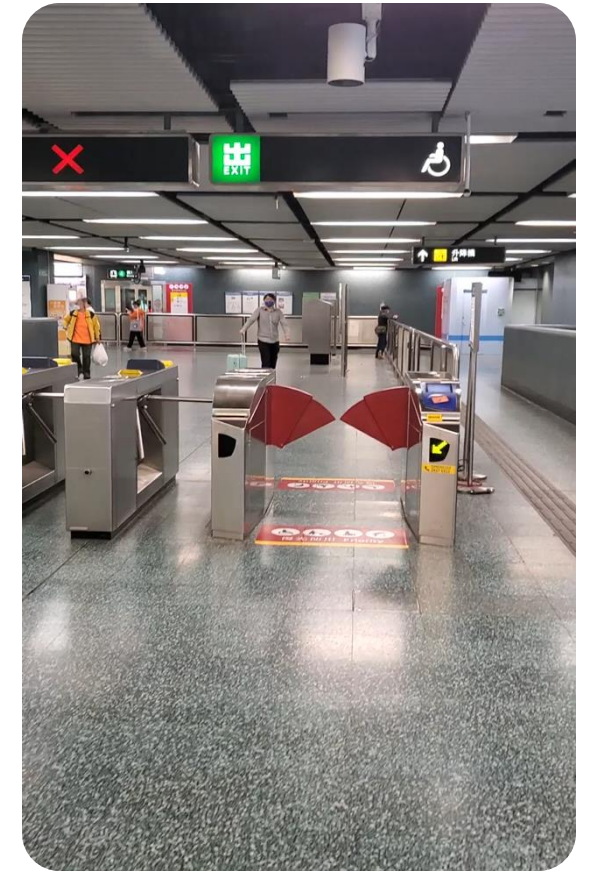
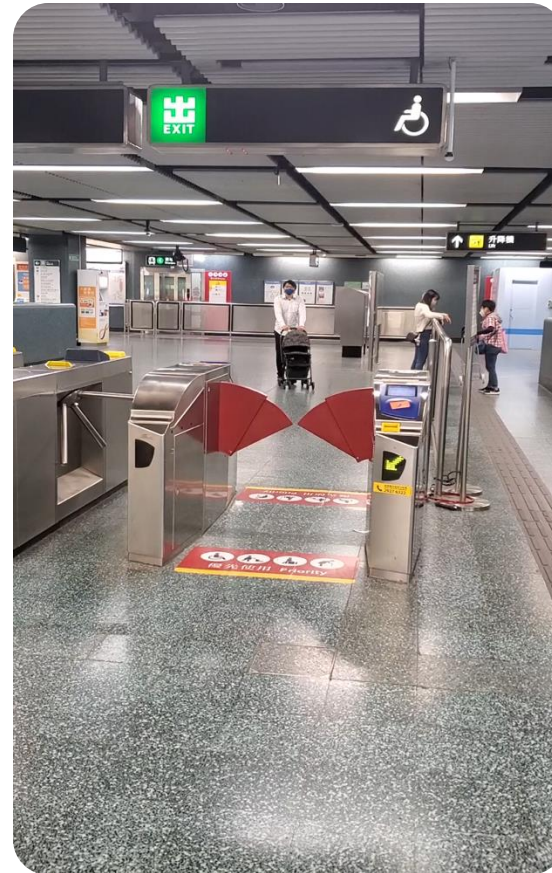


# AI-based Accident Prevention System for Escalators

Path tracking for high-risk passengers



Initiate specific public announcement & visual alert message



# Dangerous Goods Detection System

## Problem

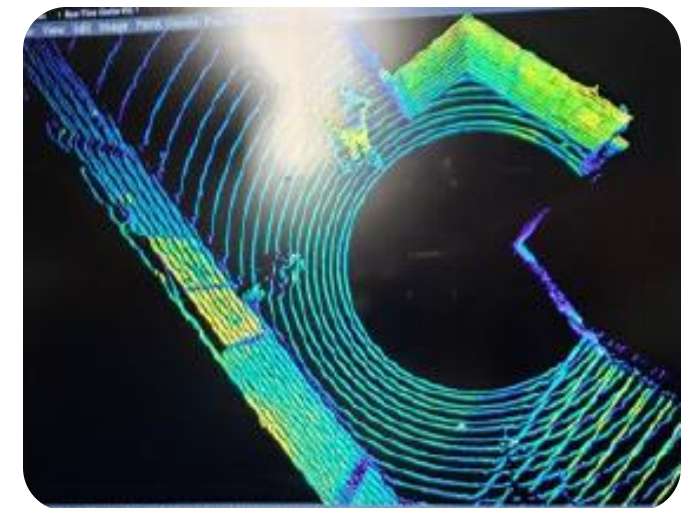
Passengers carrying bulky objects or dangerous goods in crowded railway stations pose safety risks

## Solution

- Light Detection and Ranging (LiDAR) and Artificial Intelligence (AI) object detection
- Issue alert message to station staff for taking immediate actions

大孺攜石油氣罐搭荃灣線 港鐵:已交警方跟進

f G+ t e 2021-08-19 21:33 列印 文字大小



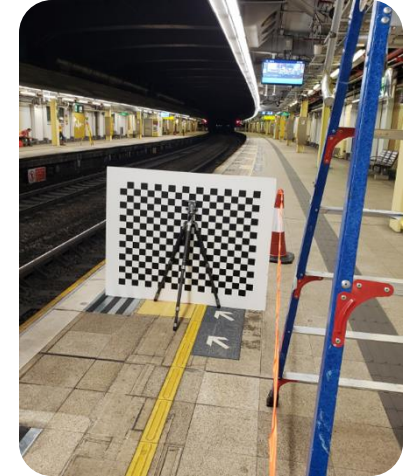
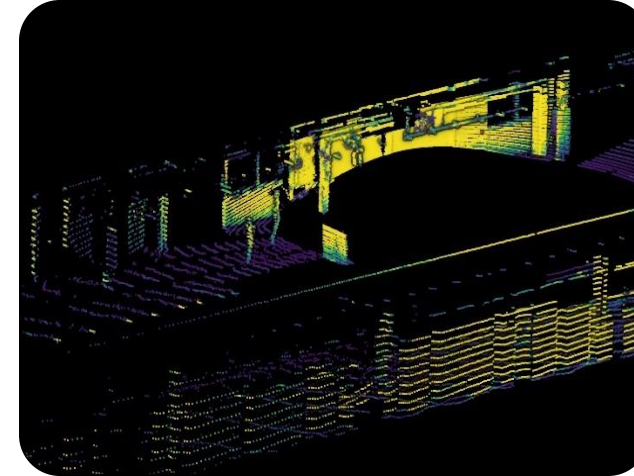
# AI-based Platform Crowd Control System

## Problem

- Passenger falling into track or bumping against trains on overcrowded platforms
- Infringement of passenger over yellow line on the platform with no platform screen doors

## Solution

- **LiDAR** detection
- Trigger public address announcements to the passenger
- Send alert messages to advise station staff for carrying out different crowd control strategies



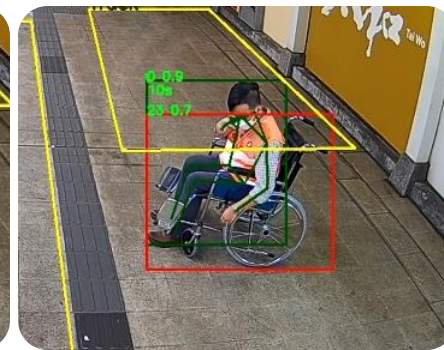
# Video analytics Platform Crowd Control System

## Problem

- Passenger falling into track or bumping against trains on overcrowded platforms
- Infringement of passenger over yellow line on the platform with no platform screen doors

## Solution

- **Video Content Analysis** with existing CCTV system
- **Automatic** trigger public address announcements to the passenger
- Send alert messages to advise station staff for carrying out different crowd control strategies



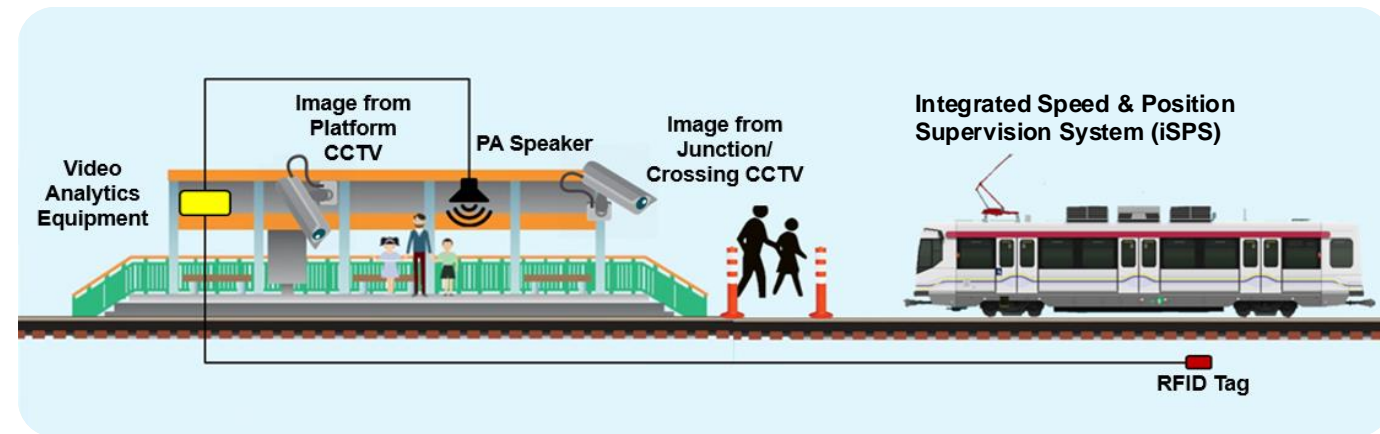
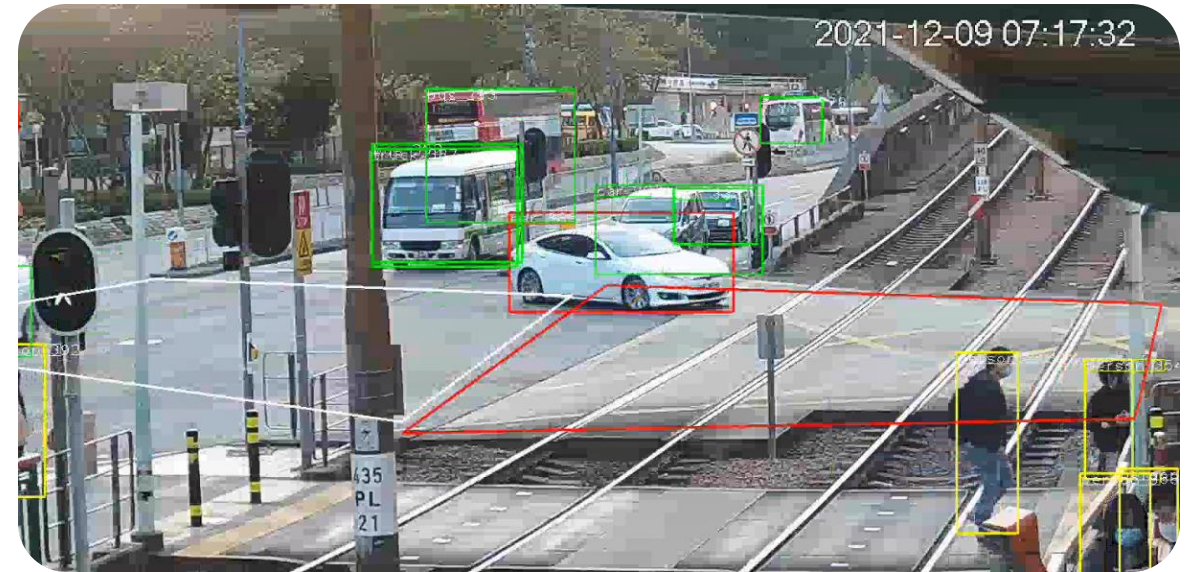
# Smart Junction System

## Problem

- Open Light Rail system – close interface with road vehicles without physical barriers
- Jump-red vehicles and pedestrian ignoring traffic signal

## Solution

- **Patented Video Analysis** with CCTV system
- **Automatic detection** algorithm with consideration of the trajectory and moving direction of road vehicles to provide **accurate detection**
- **Instant pre-alert** to pedestrian and train captain



# Smart Bollard

## Problem

- Unsignalized pedestrian crossings
- Jaywalkers ignoring approaching trains
- Pedestrians focusing on using mobile phone

## Solution

- Utilizing the same RFID system on train
- **Patented** Solutions in HK and UK
- **Visual and audio alerts** through a flashing bollard and on-ground LED strip





# Escalator Comb Object Identification System (EOIS)

## Problem

Escalator step misalignment due to foreign object

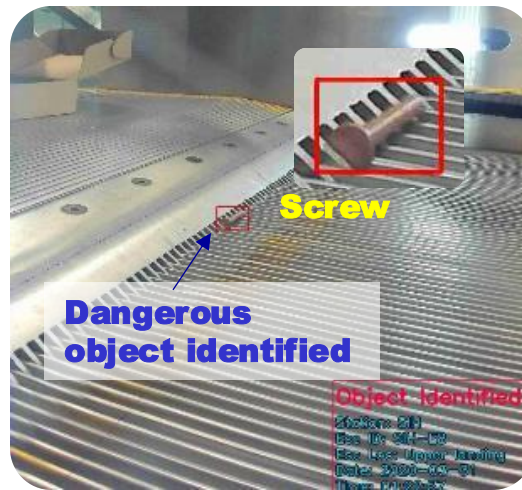
## Solution



Dedicated Camera

Video Analytics

Automatic Alert



- Instant message sent to station operators for on-site inspection

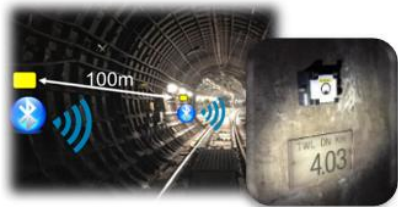


# Smart Trackside

## Problem

Unauthorized track access

## Solution



### Smart Tunnel

Indoor Positioning  
along Tunnel



### Trackside Access Door Detection System (TADDS)

Trackside Door Status

- **Patented** tailored algorithm based on Bluetooth signal
  - Overview of real-time positions of all workers
  - **Enhancing trackwork safety**
- 
- **Patented** solution on IoT backbone along tunnel
  - Real-time trackside door status
  - **Intrusion detection and access control**

# CHAPTER 3 Conclusion



**IRSC 2022**  
INTERNATIONAL RAILWAY SAFETY COUNCIL  
SEVILLA, OCTOBER 16-21, 2022



機電工程署  
EMSD



## Conclusion

- Committed to expedite the I&T transformation to sustain continuous enhancement on railway safety
- EMSD and MTR will continue to work towards a smarter and safer railway, continuously create cohered partnership to enrich the I&T development in railway safety



**IRSC 2022**  
INTERNATIONAL RAILWAY SAFETY COUNCIL  
SEVILLA, OCTOBER 16-21, 2022





機電工程署  
EMSD



[www.irsc2022.com](http://www.irsc2022.com)

