



IRSC 2022

INTERNATIONAL RAILWAY
SAFETY COUNCIL

SEVILLA, OCTOBER 16-21, 2022



Smart Assurance

Risk Based Assurance

Nicola Uijen and Pablo Forteza

Head of HSE and Head of Engineering
Network Rail



IRSC 2022
INTERNATIONAL RAILWAY SAFETY COUNCIL
SEVILLA, OCTOBER 16-21, 2022

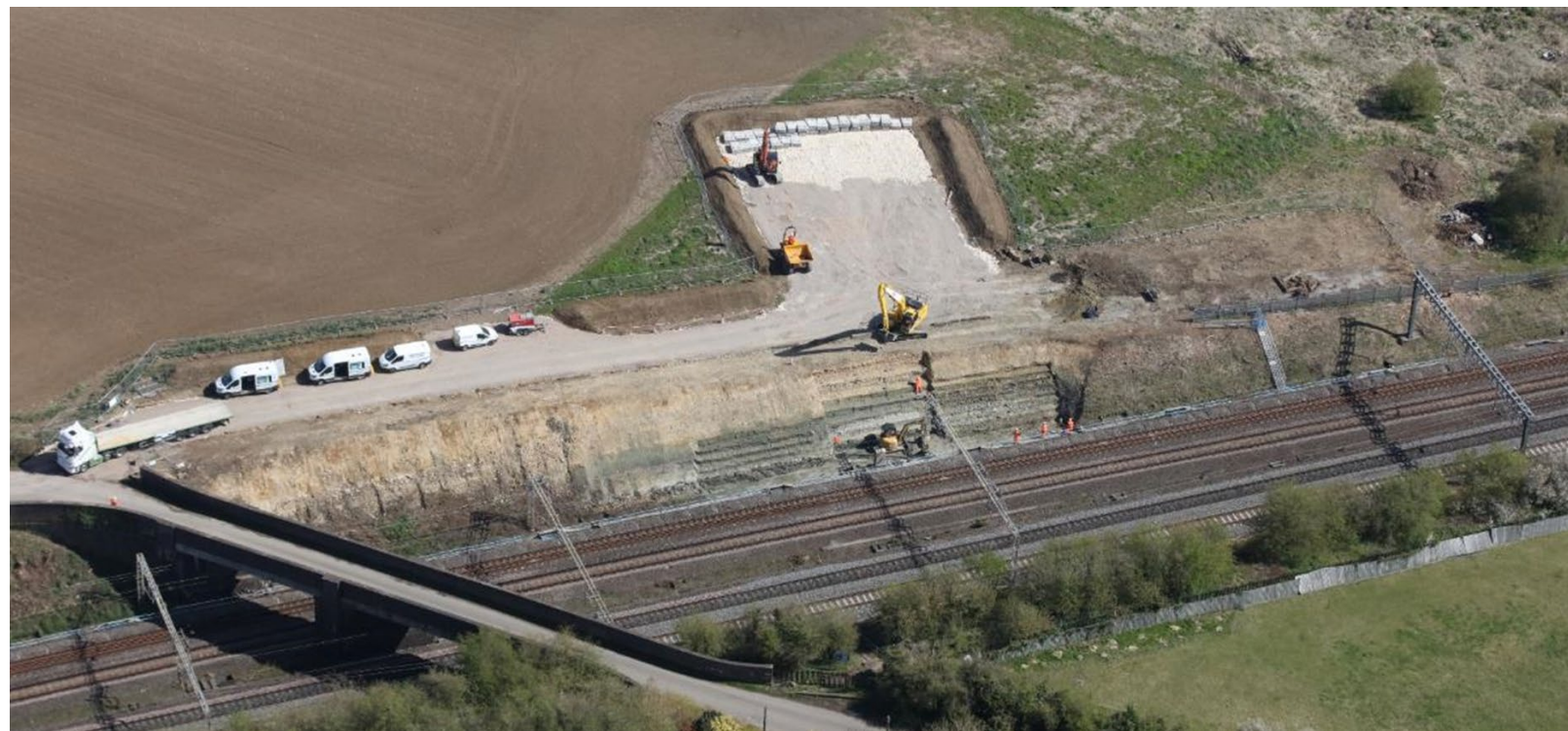


CHAPTER 1

Context

Context

- Management Information
- Organisational Change
- Construction (Design & Management) Regulations
- Plan, Do, Check, Act

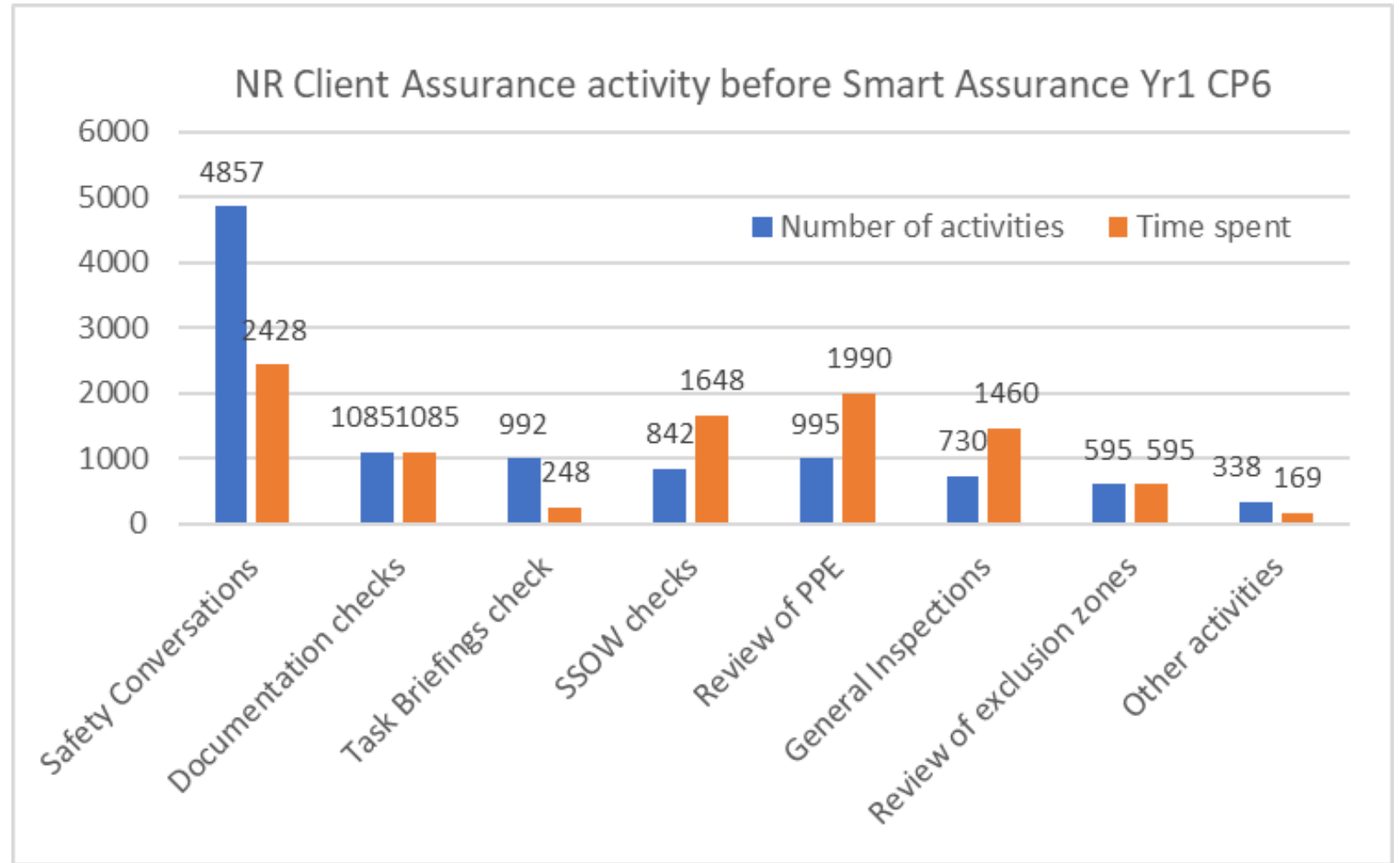


CHAPTER 2

Hypothesis

Hypothesis

- The level 1 assurance being undertaken by Capital Delivery NW&C is insufficient.
- Improvement actions are risk focussed, have a single approach and avoid duplication of effort





CHAPTER 3

Smart Assurance

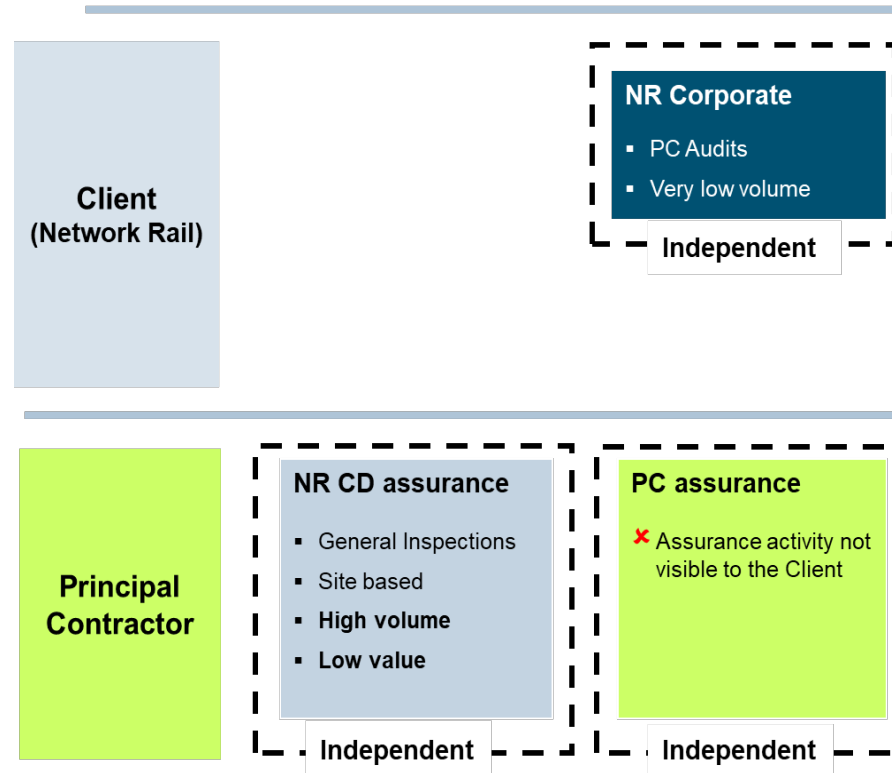
Smart Assurance

A coordinated approach

- Client moves out of Contractor's area of accountability
- Increased focus on Contractor's Management Systems

Before Smart Assurance

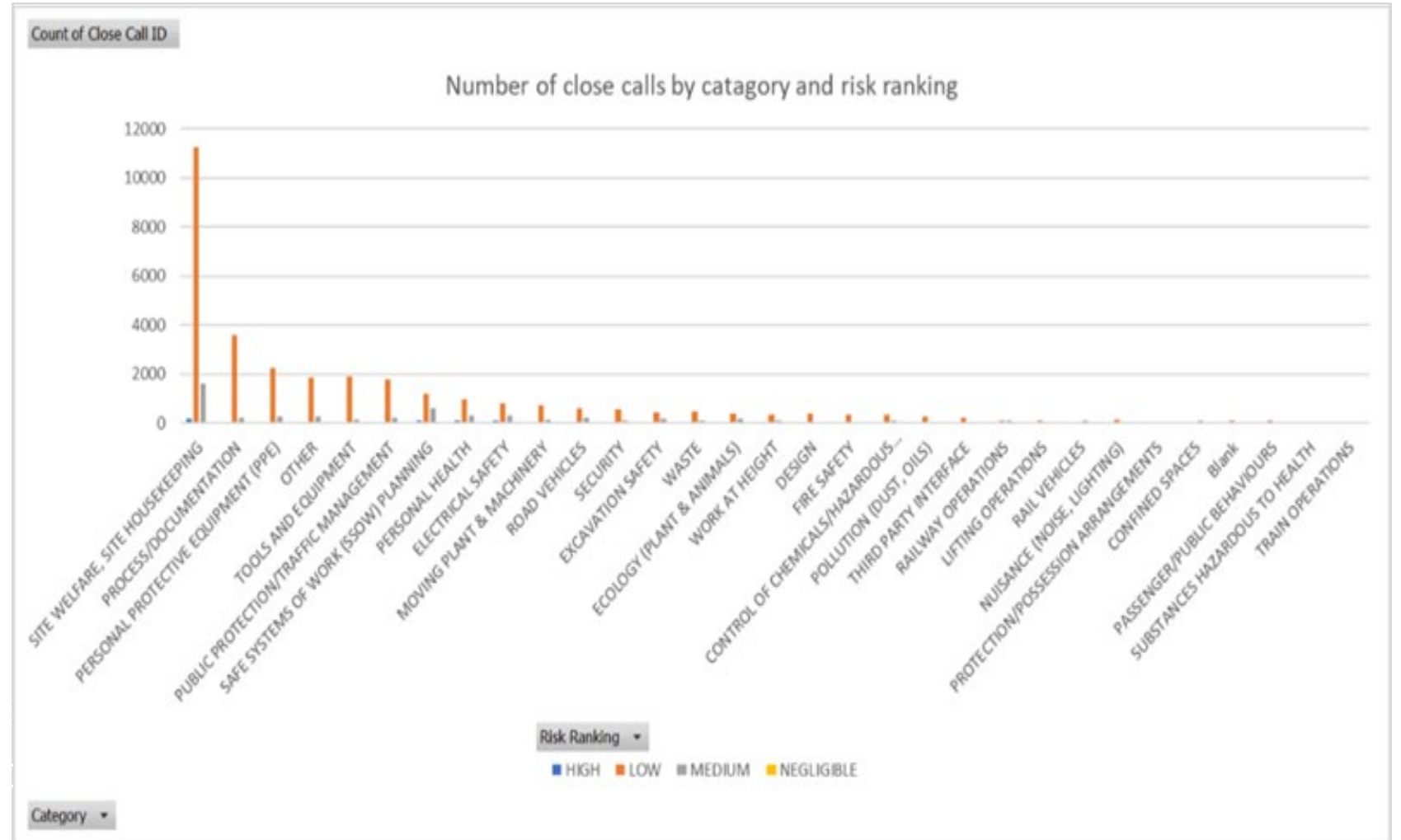
- Assurance not coordinated between Client & Contractor
- No Shared learning or consistence in approach to assurance
- Not risk based



Smart Assurance

A risk based approach

- Data Analysis
 - Close calls
 - Volume vs risk



CHAPTER 4

Learn & Share



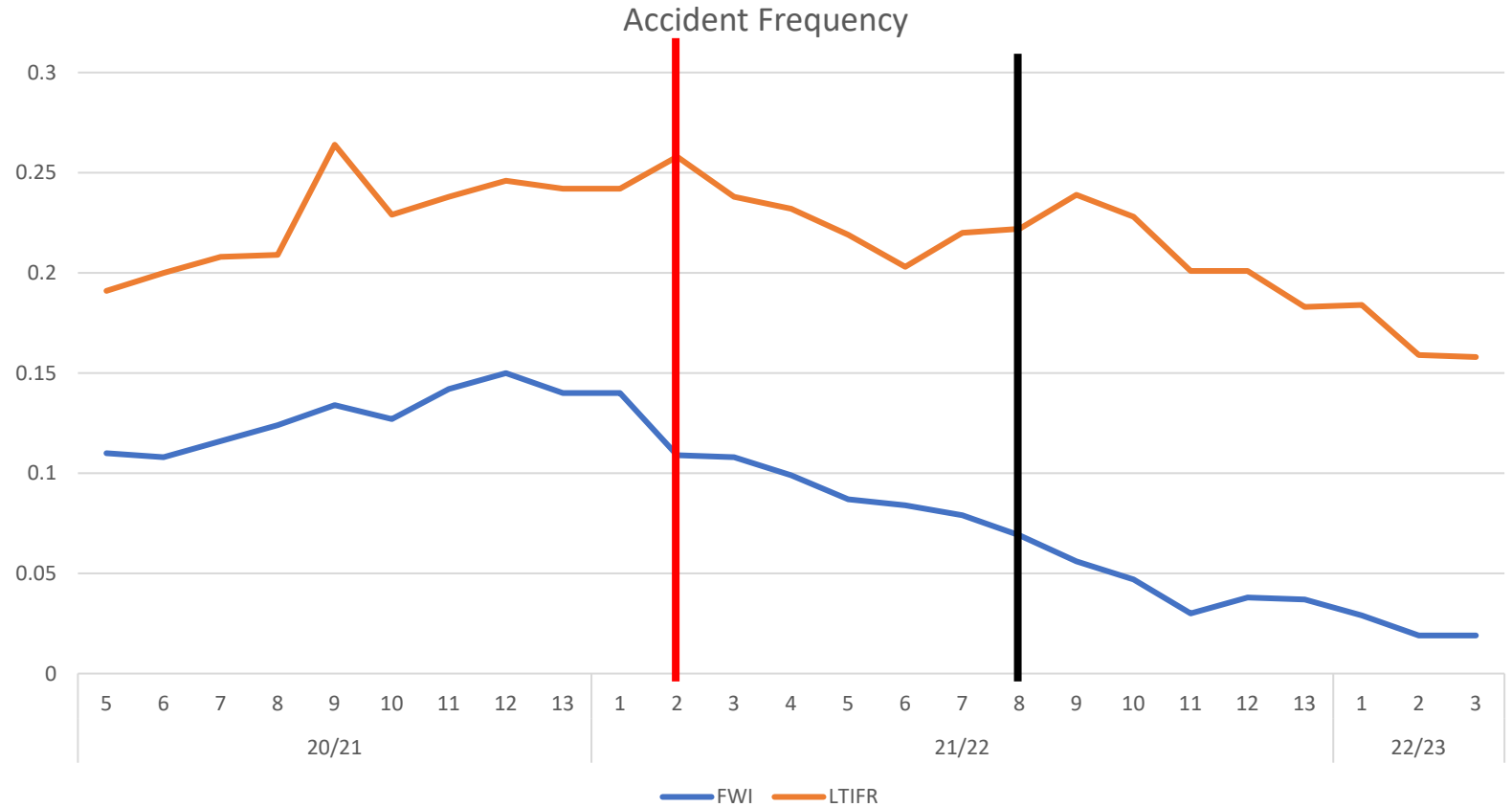
IRSC 2022
INTERNATIONAL RAILWAY SAFETY COUNCIL
SEVILLA, OCTOBER 16-21, 2022



Learn & Share

Making Improvements

- Reorganisation
- SHELT Structure
- Risk Based Improvement Streams
- Award and Reward
- Best practise forums





www.irsc2022.com

