



Safety?

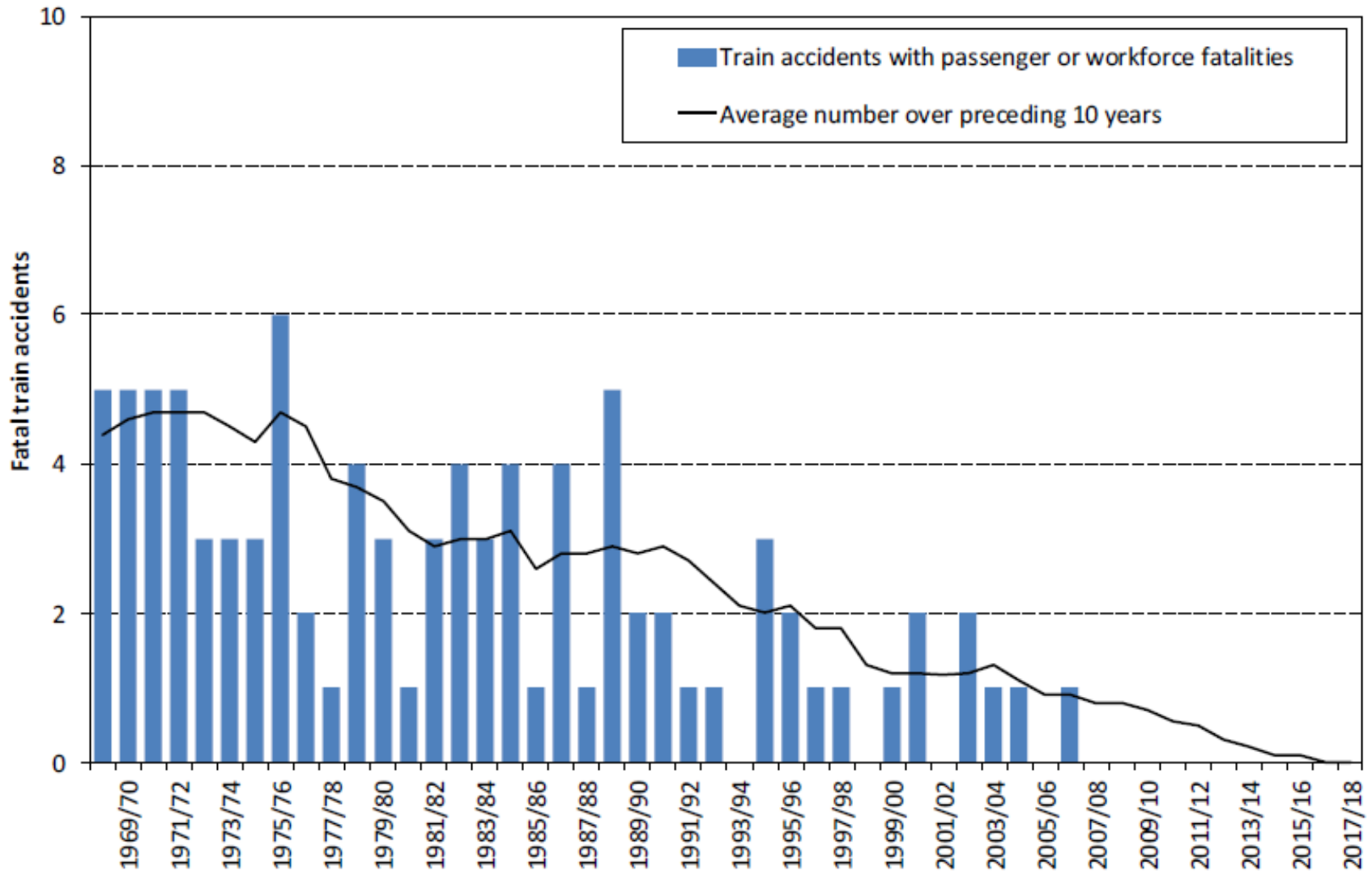
Done.



Allan Spence

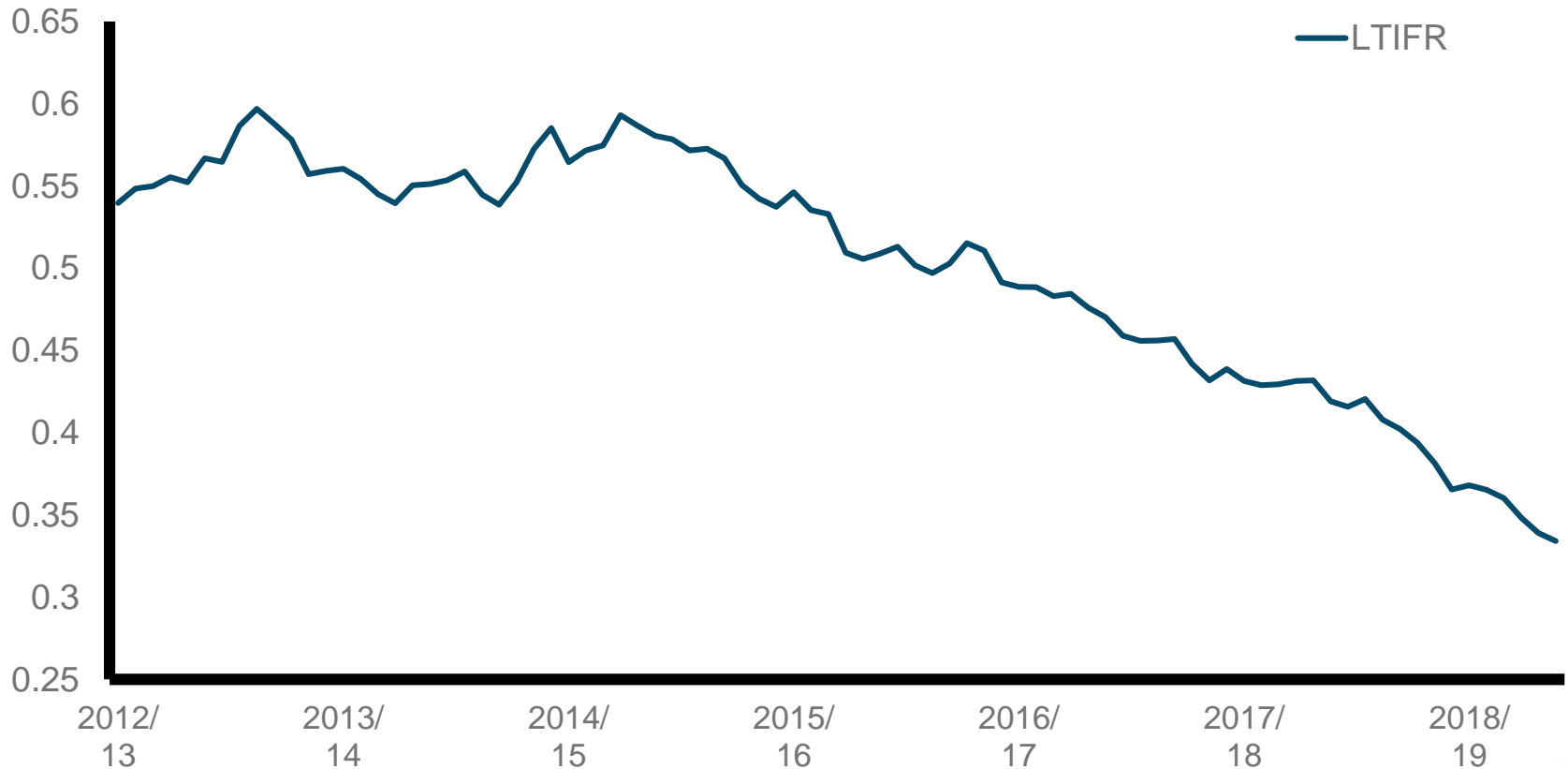
Head of Corporate Passenger & Public Safety

Network Rail



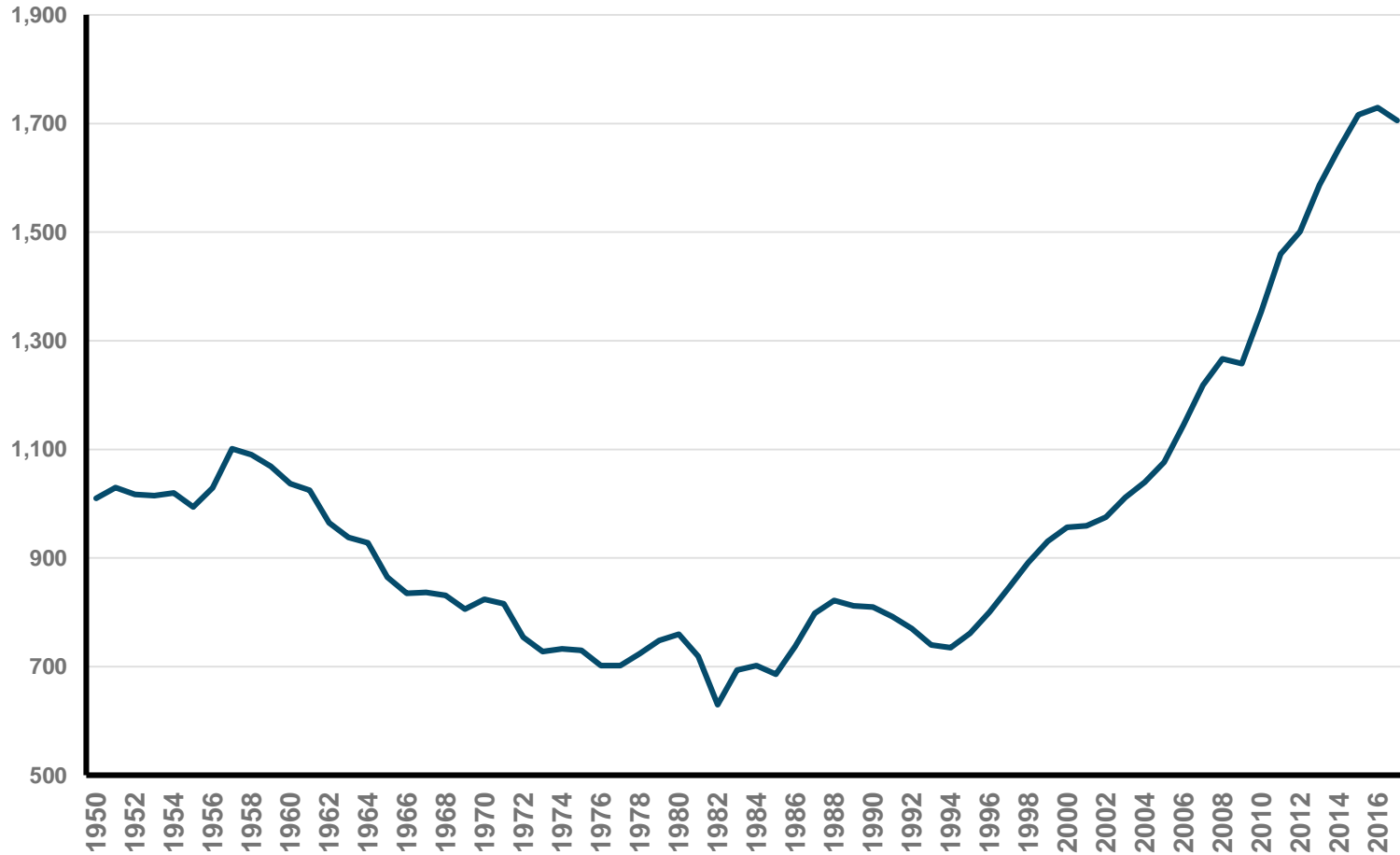
Focus on safety

Staff injuries Lost time injury frequency rate

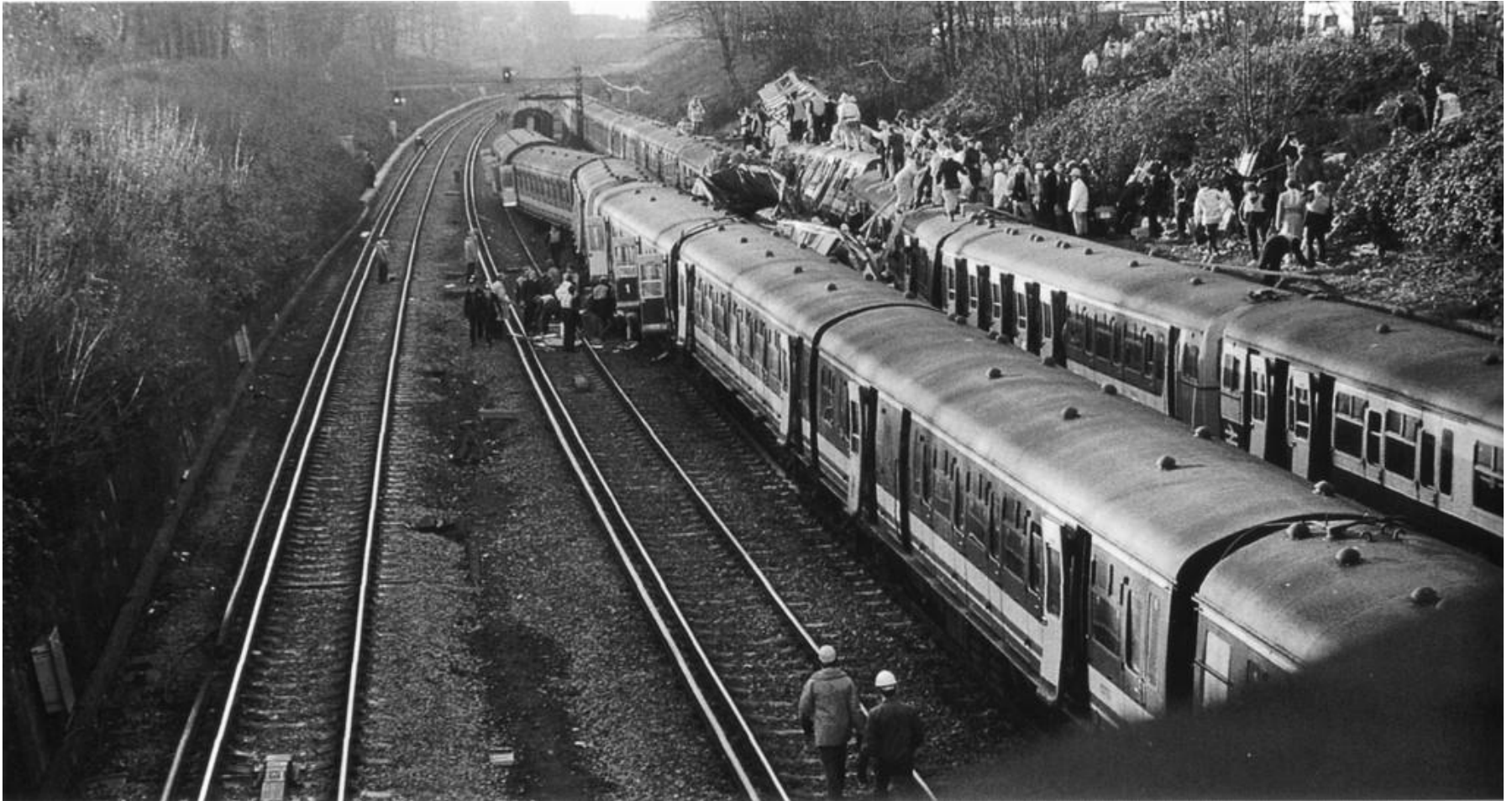


A network getting busier

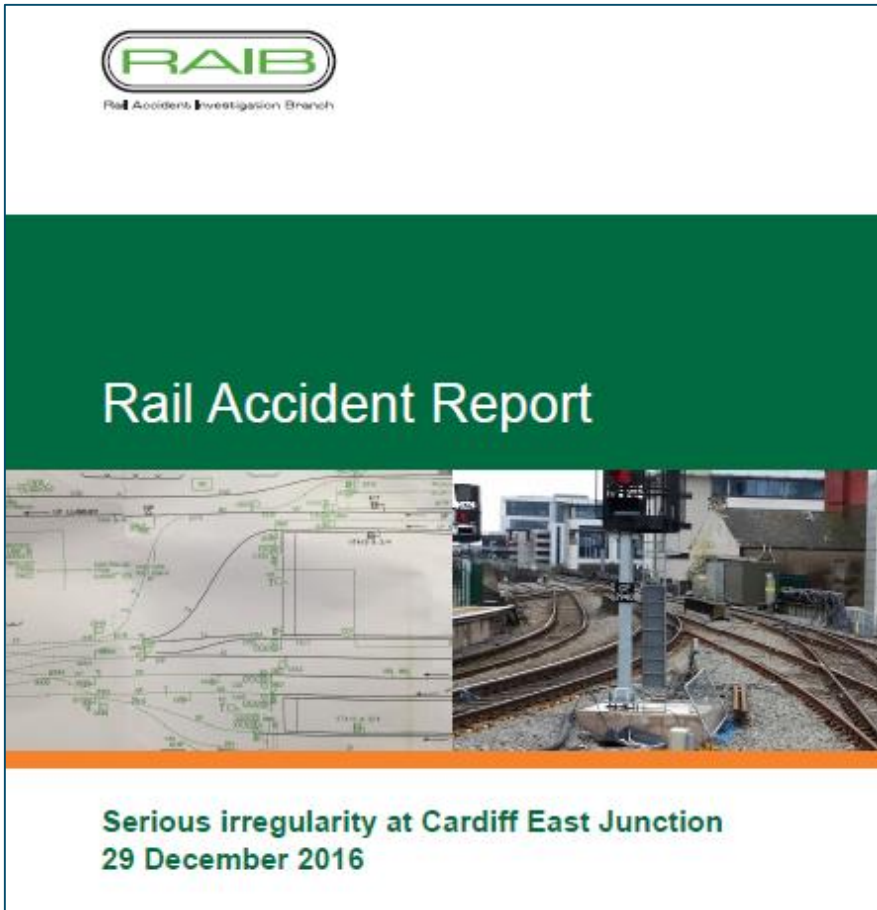
Million passenger journeys



Clapham Junction, 12 December 1988



Cardiff East Junction, 31 December 2016



Example to illustrate

Planning & Delivering safe work



Cradlehall, Scotland - 25 February 2018



Image from Forward Facing CCTV of train 1E17 showing the rail just prior to impact (image courtesy Virgin Trains East Coast)

Lamington viaduct, Scotland - 31 December 2015



