



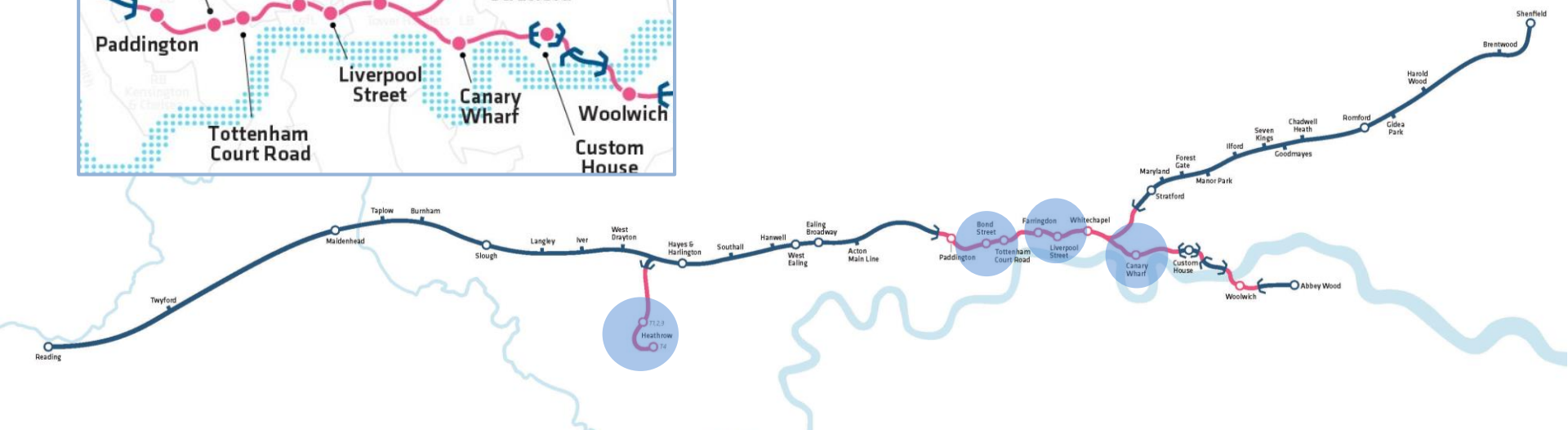
◀ **Crossrail**

MOVING LONDON FORWARD

Crossrail – enabling London to grow



► High Capacity Metro Railway



£14.8bn
cost

£42bn
net benefit

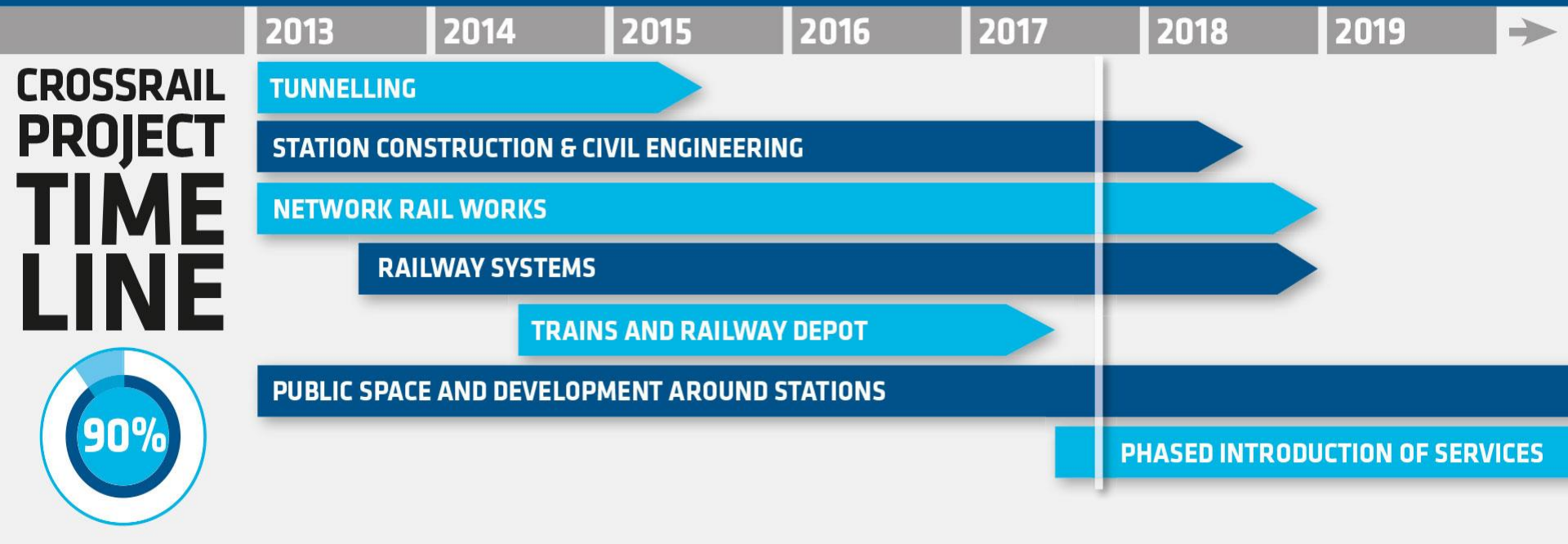
118 km
length

40 (10 new)
stations

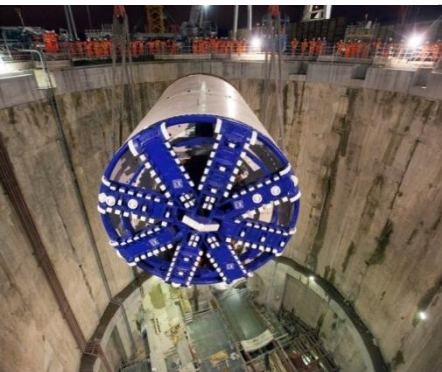
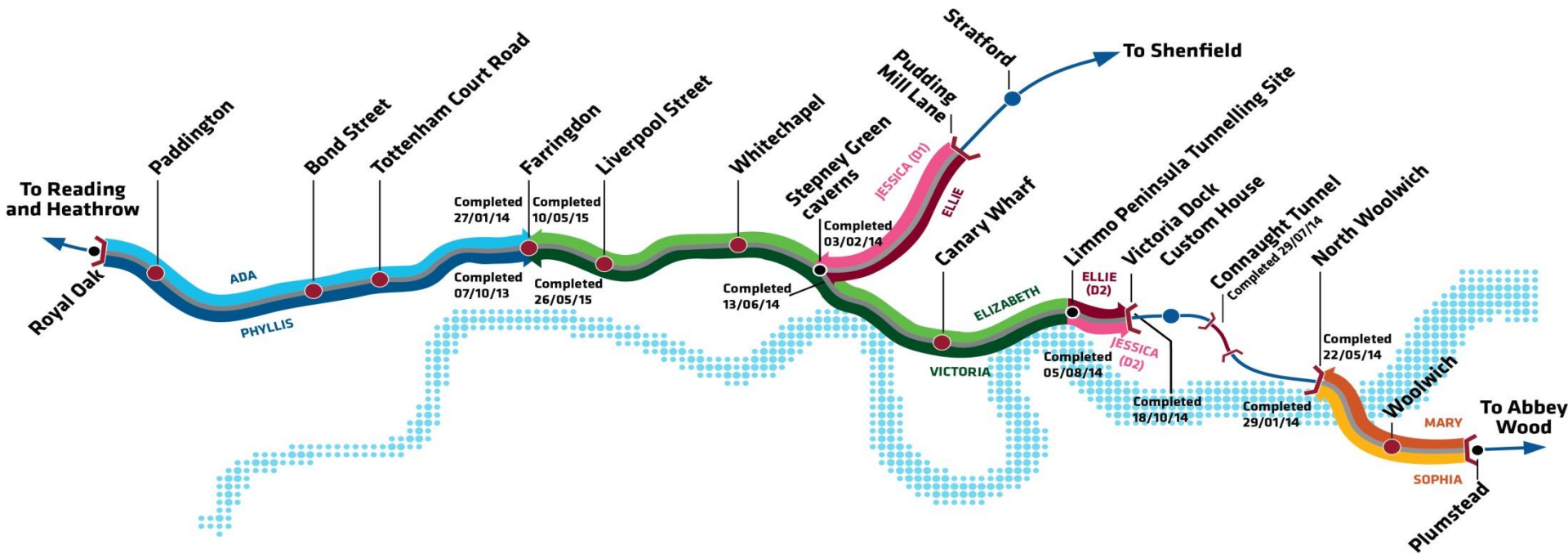
24
Trains/hour

200m
journeys pa

Project progress



Tunnelling complete



Project progress



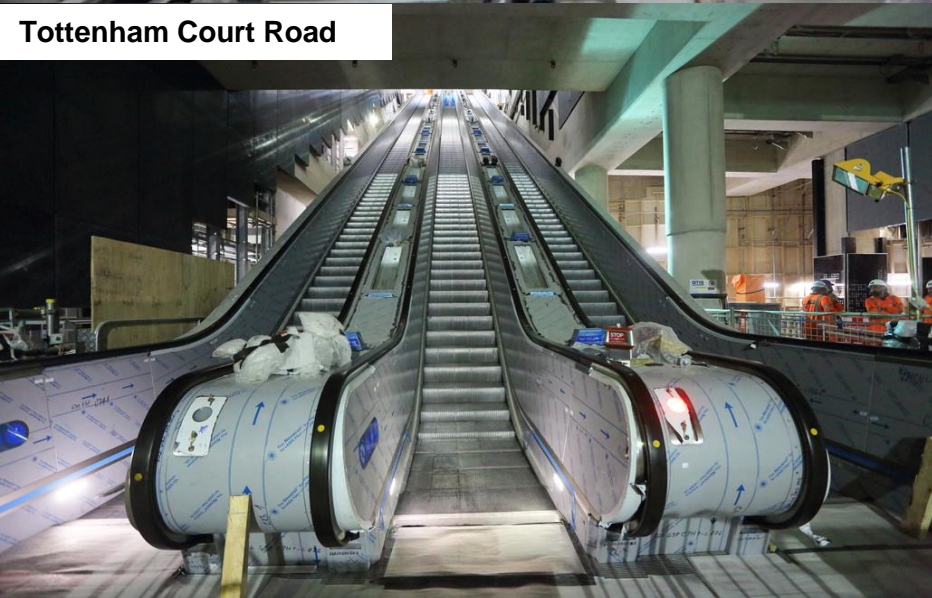
New track



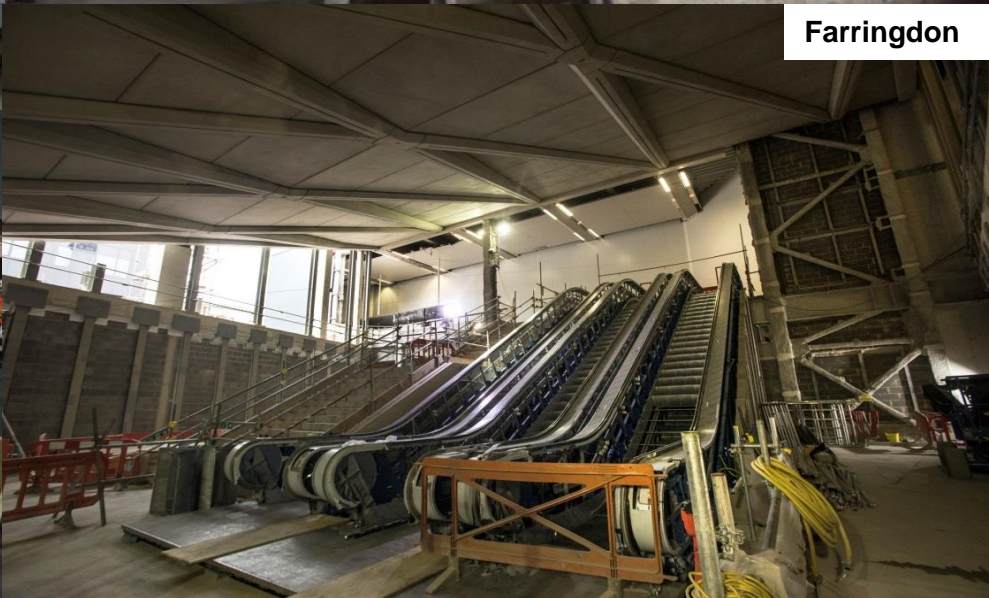
New track



Tottenham Court Road



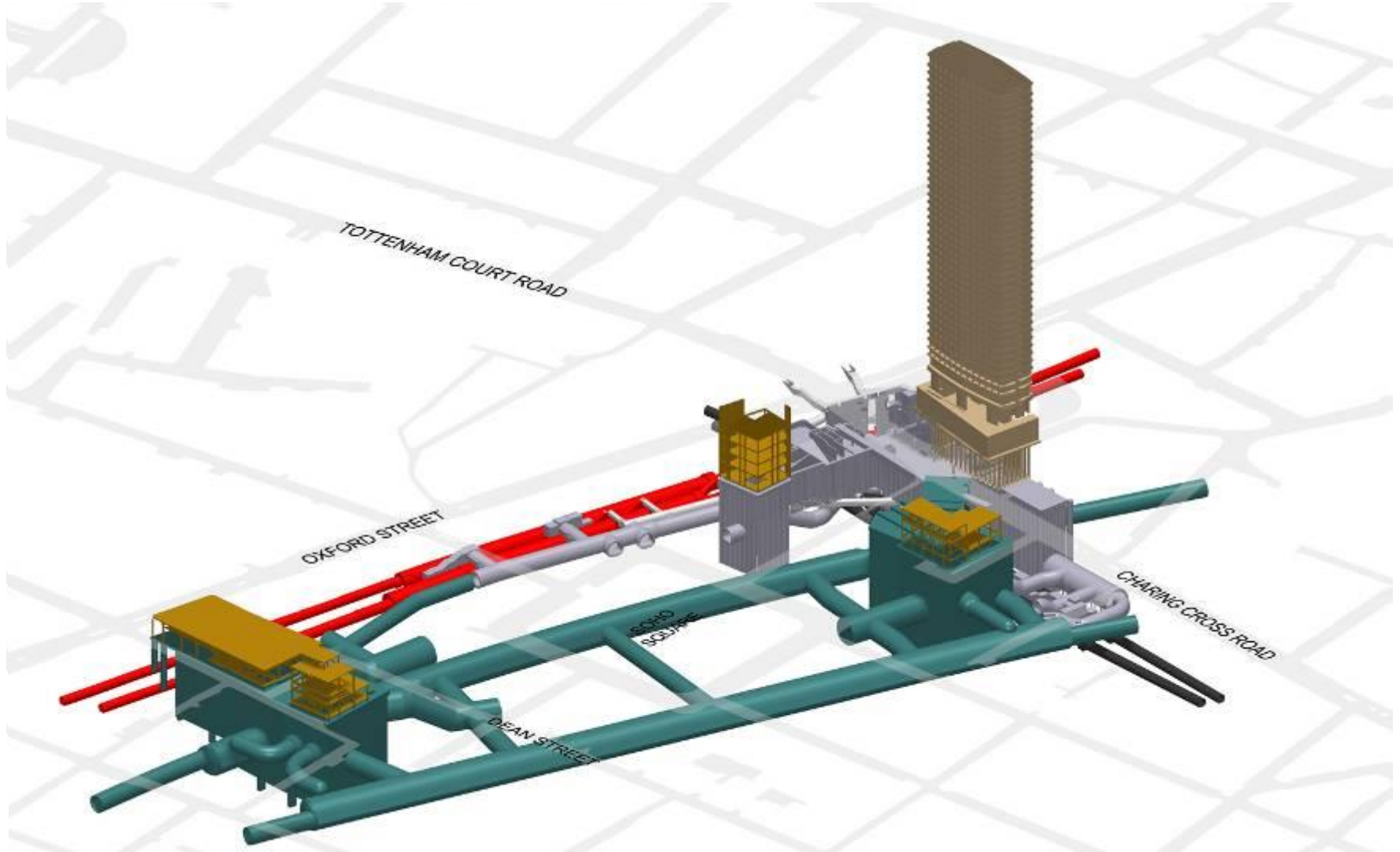
Farringdon



Video – project update



Tottenham Court Road



Target Zero and the golden rules



A STATE OF MIND

- ▶ We all have the right to go home unharmed everyday
- ▶ We believe all harm is preventable
- ▶ We must all work together to achieve this



**RESPECT
THE BASICS**



**ASSESS
THE RISKS**



**CHECK
THE SITE**

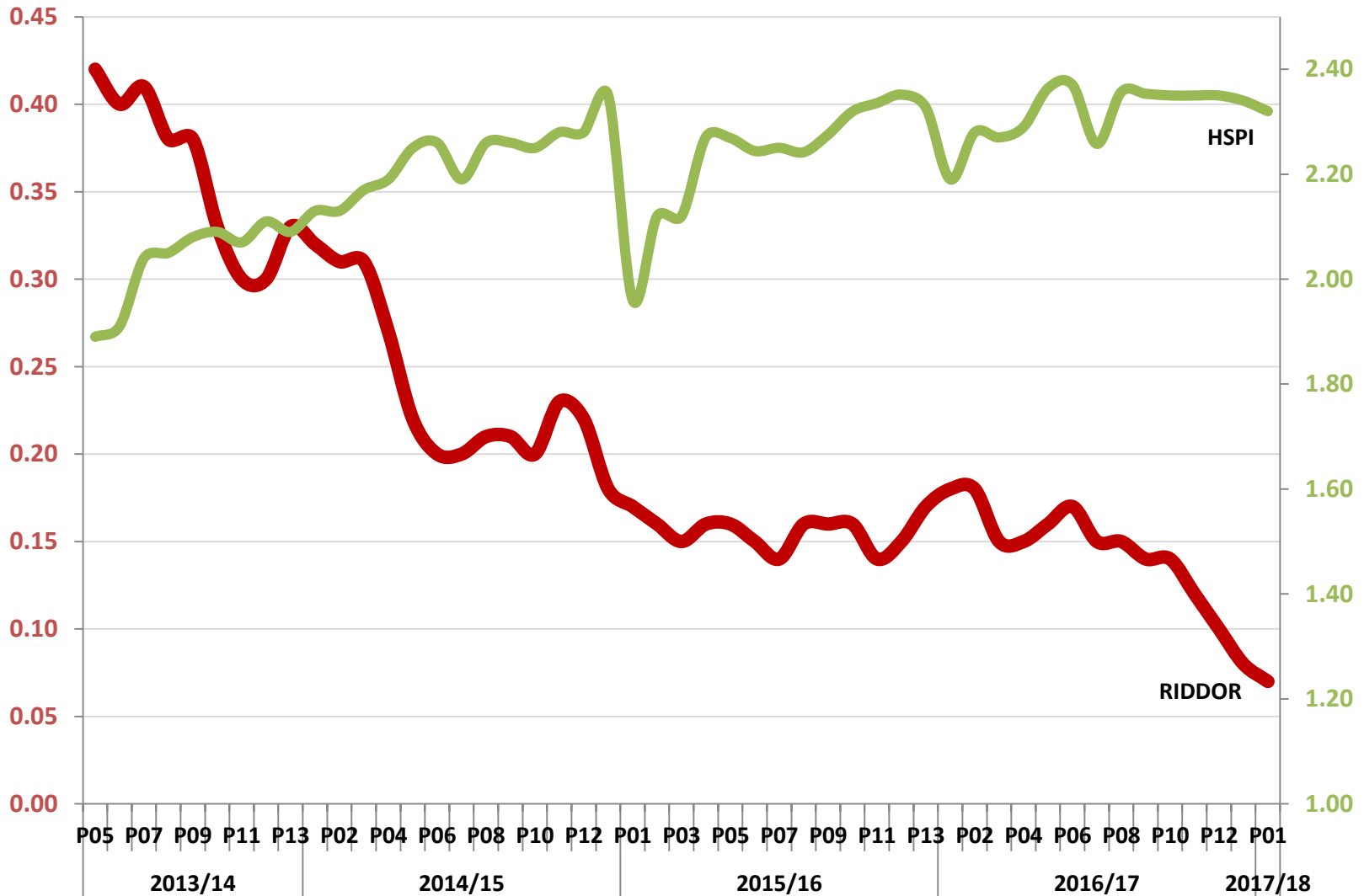


**FOLLOW SITE
REQUIREMENTS**



**SUPPORT
EACH OTHER**

Health and Safety Performance Indicators



Safety and Health Leadership Team (SHELT)



- ▶ Developed from Olympics
- ▶ Project Director level strategy planning
- ▶ Working groups develop cross programme approach
- ▶ Agreed 'rules' for programme
- ▶ Site hosted visits, with Tier 2/3 input to meetings



Thank you for work on and participation in Stepping Up Week. What do you think contributed most to the week's success? Send your feedback to steppingup@crossrail.co.uk.

Following on from Stepping Up Week, what is your personal health challenge? Think about what you can do to improve your own health and wellbeing.

Thank you for participating in the Have Your Say health survey. The results will be available from mid-December.

Rafael Foulquie, BFK, SHELT Meeting Chairman



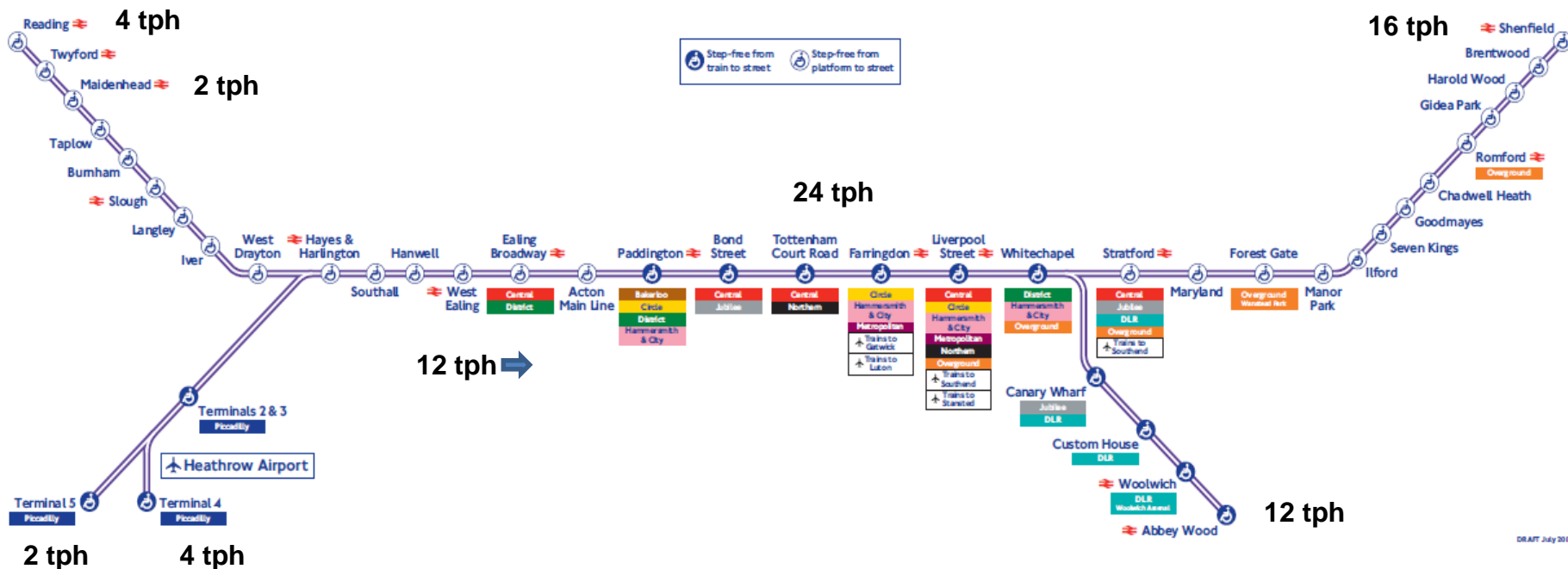
Stepping up Week



- ▶ A twice yearly event, used to highlight different aspects
- ▶ Held at site level, local control around core themes
- ▶ External speakers, equipment demos, experiences
- ▶ Day, night, weekends



2019 – Elizabeth line opens fully



December 2019: Elizabeth line fully open. Services run between Reading and Heathrow in the west and Abbey Wood and Shenfield in the east. Peak time services shown above.

Reduction in journey times



	Current journey time	Crossrail journey time
Canary Wharf to Liverpool Street	22 minutes	6 minutes
Paddington to Whitechapel	27 minutes	13 minutes
Ealing Broadway to Farringdon	39 minutes	16 minutes
Tottenham Court Road to Woolwich	42 minutes	20 minutes



Social sustainability - skills



Crossrail skills strategy

Maintaining safety

Inspiring future talent

Supporting local labour

Revitalising the skills base



Sept 2017

704 Apprentices

15,000 enrolled at TUCA

27% of apprentice intake in last 12 months female

4,544 jobs for local people

All figures are running totals bar 'employed on project'



National Colleges for High Speed Rail



- Colleges in Birmingham and Doncaster
- To focus on engineering, design, planning, manufacturing and construction
- At full capacity, colleges will train 1,200 people every year
- Cutting edge technology with virtual and augmented reality training rooms classrooms



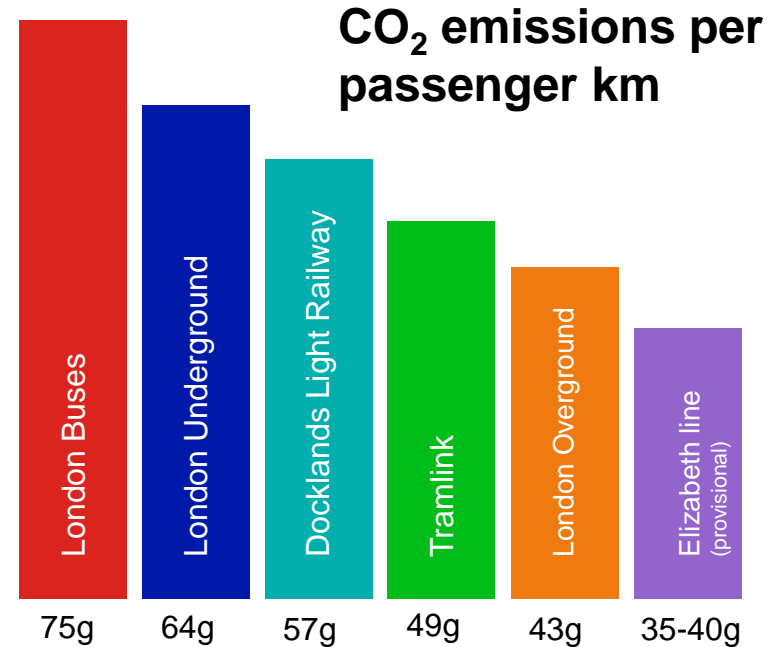
Property impacts



- ▶ £10.6bn (previously £5.5bn) additional residential and commercial property value by 2021
- ▶ Support 90,000 (previously 55,000) new homes by 2021
- ▶ 4.4m (previously 3.25m) square feet of commercial office floor space by 2021
- ▶ Between 2008 and 2016, 48% of planning applications within 1 km of stations make a direct reference to Crossrail supporting their proposals



Environmental sustainability



7.9

million tonnes of material excavated during construction



of excavated material beneficially reused

11% CO₂

saving during construction against baseline emissions

84%

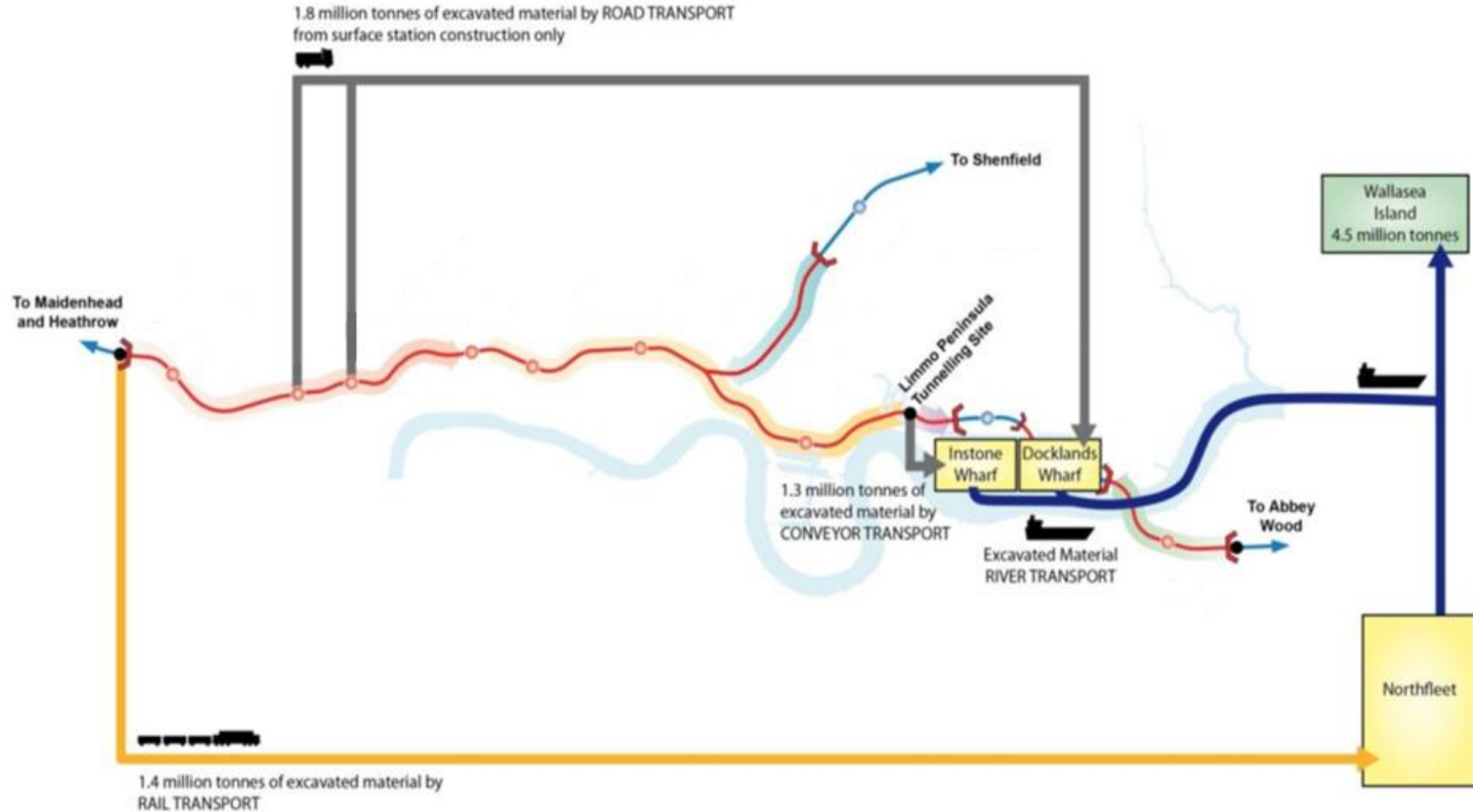


construction machinery in central section fitted with emissions controls, reducing air pollutants



items spanning 55 million years unearthed across 20 sites

Wallasea Island



Questions



MOVING LONDON FORWARD