



# Time for integrated safety approaches between railway and road?

Matts-Åke Belin,  
Chief Technology Officer -  
Traffic Safety  
[matts-ake.belin@vectura.se](mailto:matts-ake.belin@vectura.se)

## Different safety level

	1997	1998	1999	2000	2001	2002	2003	2004	2005	2006	Average
<b>Railway</b>	16	16	8	10	13	16	24	13	22	20	16
<b>Road</b>	507	492	536	564	551	532	529	480	440	445	508

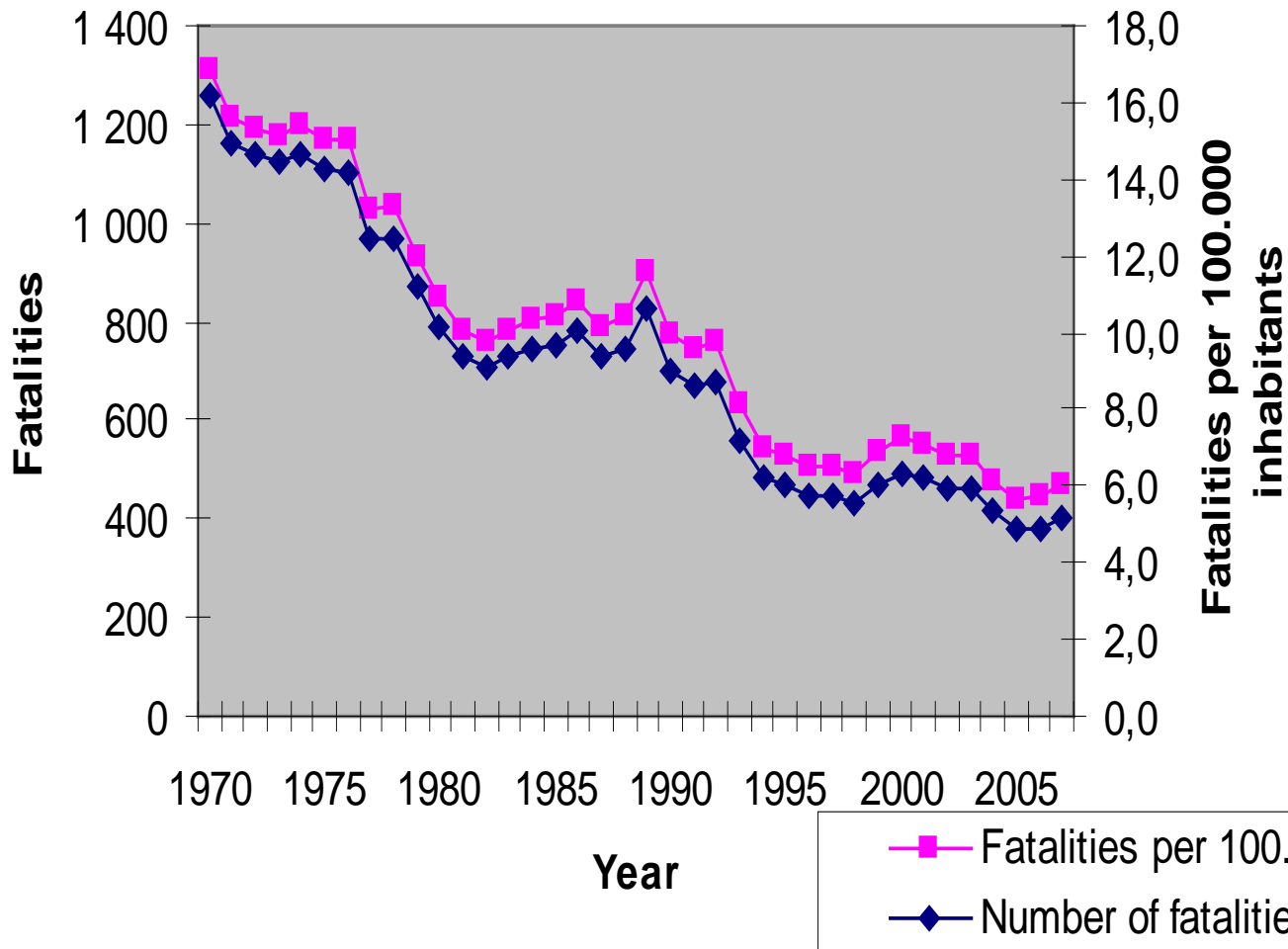
# Different safety philosophies

	<b>Railway</b>	<b>Road</b>
<b>Balance between transport goals</b>	Safety is a paramount goal	Safety is one of many goals
<b>Cause of safety problem</b>	Lack of appropriate design	Individual road user

# Different legislation

	<b>Railway</b>	<b>Road</b>
<b>Responsibility</b>	All important stakeholders	Individual road user
<b>Accidents investigations</b>	Regulated activity	Police investigation

# Number of fatalities and fatalities per 100.000 inhabitants in Sweden 1970 - 2007





## New approaches

- The Swedish parliament Vision zero (1997)
- Volvo vision zero 2020 (2008)

# New strategies I



## New strategies II





Thank you !

matts-ake.belin@vectura.se